

# Phospho-SHP2(Y584) Antibody

Affinity Purified Rabbit Polyclonal Antibody (Pab)  
Catalog # AP3716a

## Product Information

---

<b>Application</b>	DB, WB, E
<b>Primary Accession</b>	<a href="#">Q06124</a>
<b>Other Accession</b>	<a href="#">P41499</a> , <a href="#">P35235</a>
<b>Reactivity</b>	Human, Rat, Mouse
<b>Predicted</b>	Mouse, Rat
<b>Host</b>	Rabbit
<b>Clonality</b>	Polyclonal
<b>Isotype</b>	Rabbit IgG
<b>Clone Names</b>	RB16677

## Additional Information

---

<b>Other Names</b>	Tyrosine-protein phosphatase non-receptor type 11, Protein-tyrosine phosphatase 1D, PTP-1D, Protein-tyrosine phosphatase 2C, PTP-2C, SH-PTP2, SHP-2, Shp2, SH-PTP3, PTPN11, PTP2C, SHPTP2
<b>Target/Specificity</b>	This SHP2 Antibody is generated from rabbits immunized with a KLH conjugated synthetic phosphopeptide corresponding to amino acid residues surrounding Y584 of human SHP2.
<b>Dilution</b>	DB~~1:500 WB~~1:2000 E~~Use at an assay dependent concentration.
<b>Format</b>	Purified polyclonal antibody supplied in PBS with 0.09% (W/V) sodium azide. This antibody is purified through a protein A column, followed by peptide affinity purification.
<b>Storage</b>	Maintain refrigerated at 2-8°C for up to 2 weeks. For long term storage store at -20°C in small aliquots to prevent freeze-thaw cycles.
<b>Precautions</b>	Phospho-SHP2(Y584) Antibody is for research use only and not for use in diagnostic or therapeutic procedures.

## Protein Information

---

### Background

---

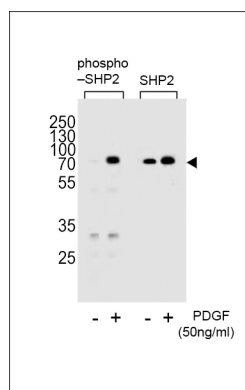
SHP2 is a member of the protein tyrosine phosphatase (PTP) family. PTPs are known to be signaling molecules that regulate a variety of cellular processes including cell growth, differentiation, mitotic cycle, and oncogenic transformation. This PTP contains two tandem Src homology-2 domains, which function as phospho-tyrosine binding domains and mediate the interaction of this PTP with its substrates. This PTP is

widely expressed in most tissues and plays a regulatory role in various cell signaling events that are important for a diversity of cell functions, such as mitogenic activation, metabolic control, transcription regulation, and cell migration.

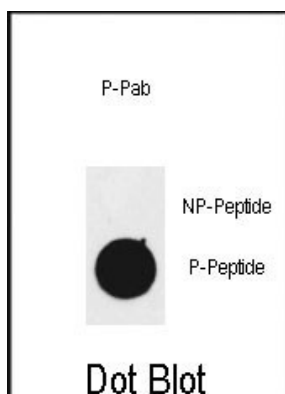
## References

- Carver, K.C., et al. *J. Biol. Chem.* 285(11):8003-8012(2010)  
Pierpont, E.I., et al. *Am. J. Med. Genet. A* 152A (3), 591-600 (2010)  
Rani, D.S., et al. *Mitochondrion* 10(2):166-173(2010)  
Bakken, T., et al. *Virology* 397(2):379-388(2010)

## Images



Western blot analysis of lysate from NIH-3T3 cells (from left to right), untreated or treated with PDGF at 50ng/ml, using Phospho-SHP2(Y584) Antibody (Cat. #AP3716a) or SHP2 Antibody. Lysate at 15ug per lane. AP3716a was diluted at 1:2000 dilution at each lane. A goat anti-rabbit IgG H&L (HRP) at 1:5000 dilution was used as the secondary antibody.



Dot blot analysis of anti-Phospho-SHP2-pY584 Phospho-specific Pab (Cat. #AP3716a) on nitrocellulose membrane. 50ng of Phospho-peptide or Non Phospho-peptide per dot were adsorbed. Antibody working concentrations are 0.5ug per ml.

Please note: All products are 'FOR RESEARCH USE ONLY. NOT FOR USE IN DIAGNOSTIC OR THERAPEUTIC PROCEDURES'.