

# Bi-Phospho-APG8b(MAP1LC3B)(T93/Y99) Antibody

Affinity Purified Rabbit Polyclonal Antibody (Pab)

Catalog # AP3739a

## Product Information

---

Application	DB, E
Primary Accession	<a href="#">Q9GZQ8</a>
Other Accession	<a href="#">A6NCE7</a> , <a href="#">NP_073729</a>
Reactivity	Human
Host	Rabbit
Clonality	Polyclonal
Isotype	Rabbit IgG
Clone Names	RB17595
Calculated MW	14688

## Additional Information

---

Gene ID	81631
Other Names	Microtubule-associated proteins 1A/1B light chain 3B, Autophagy-related protein LC3 B, Autophagy-related ubiquitin-like modifier LC3 B, MAP1 light chain 3-like protein 2, MAP1A/MAP1B light chain 3 B, MAP1A/MAP1B LC3 B, Microtubule-associated protein 1 light chain 3 beta, MAP1LC3B, MAP1ALC3
Target/Specificity	This APG8b(MAP1LC3B) Antibody is generated from rabbits immunized with a KLH conjugated synthetic phosphopeptide corresponding to amino acid residues surrounding T93/Y99 of human APG8b(MAP1LC3B).
Dilution	DB~~1:500 E~~Use at an assay dependent concentration.
Format	Purified polyclonal antibody supplied in PBS with 0.09% (W/V) sodium azide. This antibody is purified through a protein A column, followed by peptide affinity purification.
Storage	Maintain refrigerated at 2-8°C for up to 2 weeks. For long term storage store at -20°C in small aliquots to prevent freeze-thaw cycles.
Precautions	Bi-Phospho-APG8b(MAP1LC3B)(T93/Y99) Antibody is for research use only and not for use in diagnostic or therapeutic procedures.

## Protein Information

---

Name	MAP1LC3B ( <a href="#">HGNC:13352</a> )
Synonyms	MAP1ALC3

<b>Function</b>	Ubiquitin-like modifier involved in formation of autophagosomal vacuoles (autophagosomes) (PubMed: <a href="#">20418806</a> , PubMed: <a href="#">23209295</a> , PubMed: <a href="#">28017329</a> ). Plays a role in mitophagy which contributes to regulate mitochondrial quantity and quality by eliminating the mitochondria to a basal level to fulfill cellular energy requirements and preventing excess ROS production (PubMed: <a href="#">23209295</a> , PubMed: <a href="#">28017329</a> ). In response to cellular stress and upon mitochondria fission, binds C-18 ceramides and anchors autophagolysosomes to outer mitochondrial membranes to eliminate damaged mitochondria (PubMed: <a href="#">22922758</a> ). While LC3s are involved in elongation of the phagophore membrane, the GABARAP/GATE-16 subfamily is essential for a later stage in autophagosome maturation (PubMed: <a href="#">20418806</a> , PubMed: <a href="#">23209295</a> , PubMed: <a href="#">28017329</a> ). Promotes primary ciliogenesis by removing OFD1 from centriolar satellites via the autophagic pathway (PubMed: <a href="#">24089205</a> ). Through its interaction with the reticulophagy receptor TEX264, participates in the remodeling of subdomains of the endoplasmic reticulum into autophagosomes upon nutrient stress, which then fuse with lysosomes for endoplasmic reticulum turnover (PubMed: <a href="#">31006537</a> , PubMed: <a href="#">31006538</a> ). Upon nutrient stress, directly recruits cofactor JMY to the phagophore membrane surfaces and promotes JMY's actin nucleation activity and autophagosome biogenesis during autophagy (PubMed: <a href="#">30420355</a> ).
<b>Cellular Location</b>	Cytoplasmic vesicle, autophagosome membrane; Lipid-anchor Endomembrane system; Lipid-anchor Mitochondrion membrane; Lipid-anchor. Cytoplasm, cytoskeleton {ECO:0000250 UniProtKB:Q9CQV6}. Cytoplasmic vesicle. Note=LC3-II binds to the autophagic membranes. LC3-II localizes with the mitochondrial inner membrane during Parkin-mediated mitophagy (PubMed:28017329). Also localizes to discrete punctae along the ciliary axoneme
<b>Tissue Location</b>	Most abundant in heart, brain, skeletal muscle and testis. Little expression observed in liver

## Background

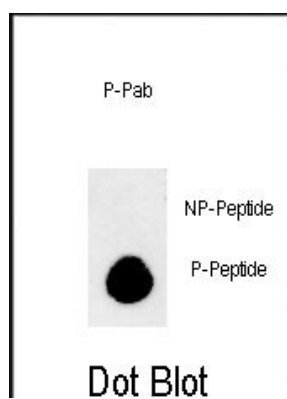
The product of this gene is a subunit of neuronal microtubule-associated MAP1A and MAP1B proteins, which are involved in microtubule assembly and important for neurogenesis. Studies on the rat homolog implicate a role for this gene in autophagy, a process that involves the bulk degradation of cytoplasmic component.

## References

Rouschop, K.M., et al. J. Clin. Invest. 120(1):127-141(2010)  
 Kirkin, V., et al. Mol. Cell 33(4):505-516(2009)  
 Othman, E.Q., et al. J. Clin. Lab. Anal. 23(4):249-258(2009)  
 Liu, Q., et al. Ai Zheng 27(1):25-29(2008)  
 Komatsu, M., et al. Cell 131(6):1149-1163(2007)

## Images

Dot blot analysis of anti-Phospho-APG8b (MAP1LC3B)-T93/Y99 Phospho-specific Pab (Cat. #AP3739a) on nitrocellulose membrane. 50ng of Phospho-peptide or Non Phospho-peptide per dot were adsorbed. Antibody working concentrations are 0.5ug per ml.



Please note: All products are 'FOR RESEARCH USE ONLY. NOT FOR USE IN DIAGNOSTIC OR THERAPEUTIC PROCEDURES'.