

# Phospho-PDHE1A(S232) Antibody

Affinity Purified Rabbit Polyclonal Antibody (Pab)

Catalog # AP3758A

## Product Information

---

<b>Application</b>	WB, DB, E
<b>Primary Accession</b>	<a href="#">P08559</a>
<b>Other Accession</b>	<a href="#">P26284</a> , <a href="#">P29804</a> , <a href="#">P35486</a> , <a href="#">Q8HXL9</a> , <a href="#">A7MB35</a> , <a href="#">NP_000275.1</a>
<b>Reactivity</b>	Human
<b>Predicted</b>	Bovine, Monkey, Mouse, Pig, Rat
<b>Host</b>	Rabbit
<b>Clonality</b>	Polyclonal
<b>Isotype</b>	Rabbit IgG
<b>Clone Names</b>	RB29473
<b>Calculated MW</b>	43296

## Additional Information

---

<b>Gene ID</b>	5160
<b>Other Names</b>	Pyruvate dehydrogenase E1 component subunit alpha, somatic form, mitochondrial, PDHE1-A type I, PDHA1, PHE1A
<b>Target/Specificity</b>	This PDHE1A Antibody is generated from rabbits immunized with a KLH conjugated synthetic phosphopeptide corresponding to amino acid residues surrounding S232 of human PDHE1A.
<b>Dilution</b>	WB~~1:1000 DB~~1:500 E~~Use at an assay dependent concentration.
<b>Format</b>	Purified polyclonal antibody supplied in PBS with 0.05% (V/V) Proclin 300. This antibody is purified through a protein A column, followed by peptide affinity purification.
<b>Storage</b>	Maintain refrigerated at 2-8°C for up to 2 weeks. For long term storage store at -20°C in small aliquots to prevent freeze-thaw cycles.
<b>Precautions</b>	Phospho-PDHE1A(S232) Antibody is for research use only and not for use in diagnostic or therapeutic procedures.

## Protein Information

---

<b>Name</b>	PDHA1
<b>Synonyms</b>	PHE1A
<b>Function</b>	The pyruvate dehydrogenase complex catalyzes the overall conversion of

pyruvate to acetyl-CoA and CO(2), and thereby links the glycolytic pathway to the tricarboxylic cycle.

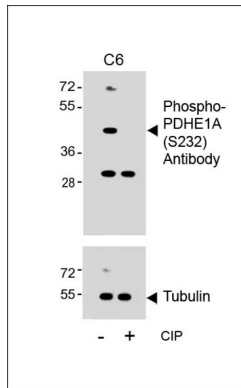
**Cellular Location**

Mitochondrion matrix.

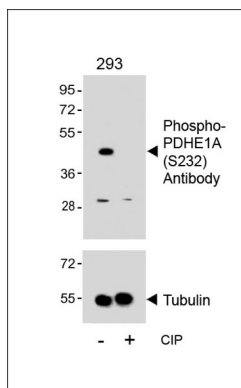
**Tissue Location**

Ubiquitous.

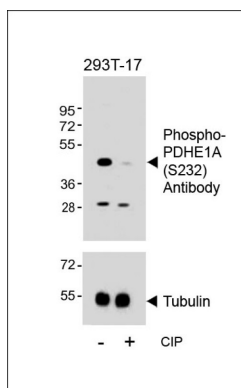
## Images



Western blot analysis of lysates from C6 cell line, untreated or treated with CIP, 100ng/ml, using Phospho-PDHE1A(S232) Antibody(upper) or Tubulin (lower).

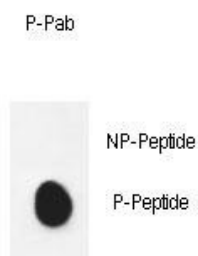


Western blot analysis of lysates from 293 cell line, untreated or treated with CIP, 100ng/ml, using Phospho-PDHE1A(S232) Antibody(upper) or Tubulin (lower).



Western blot analysis of lysates from 293T-17 cell line, untreated or treated with CIP, 100ng/ml, using Phospho-PDHE1A(S232) Antibody(upper) or Tubulin (lower).

Dot blot analysis of anti-mPDHE1A-S232 Phospho-specific Pab (Cat. #AP3758a) on nitrocellulose membrane. 50ng of Phospho-peptide or Non Phospho-peptide per dot were adsorbed. Antibody working concentrations are 0.6ug per ml.



Dot Blot

## Citations

---

- [PINK1 Is a Negative Regulator of Growth and the Warburg Effect in Glioblastoma.](#)
- [JX06 Selectively Inhibits Pyruvate Dehydrogenase Kinase PDK1 by a Covalent Cysteine Modification.](#)

Please note: All products are 'FOR RESEARCH USE ONLY. NOT FOR USE IN DIAGNOSTIC OR THERAPEUTIC PROCEDURES'.