

# Phospho-Ammonium transporter(T465) Antibody

Affinity Purified Rabbit Polyclonal Antibody (Pab)

Catalog # AP3770a

## Product Information

Application	DB, E
Primary Accession	<a href="#">E2CWJ2</a>
Host	Rabbit
Clonality	Polyclonal
Isotype	Rabbit IgG
Clone Names	RB36168
Calculated MW	53698

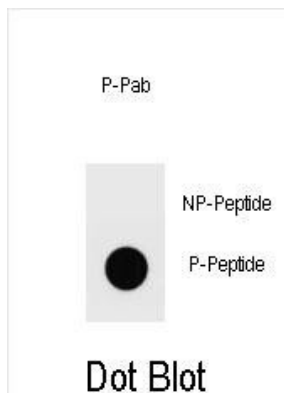
## Additional Information

Other Names	AMT1;1 ammonium/proton co-transporter
Target/Specificity	This Phospho-Ammonium transporter-T465 Antibody is generated from rabbits immunized with a KLH conjugated synthetic phosphopeptide surrounding T465 of French bean Ammonium transporter.
Dilution	DB~~1:500 E~~Use at an assay dependent concentration.
Format	Purified polyclonal antibody supplied in PBS with 0.09% (W/V) sodium azide. This antibody is purified through a protein A column, followed by peptide affinity purification.
Storage	Maintain refrigerated at 2-8°C for up to 2 weeks. For long term storage store at -20°C in small aliquots to prevent freeze-thaw cycles.
Precautions	Phospho-Ammonium transporter(T465) Antibody is for research use only and not for use in diagnostic or therapeutic procedures.

## Protein Information

Name	E2CWJ2
Cellular Location	Cell membrane {ECO:0000256   RuleBase:RU362002}; Multi-pass membrane protein {ECO:0000256   RuleBase:RU362002}. Membrane {ECO:0000256   ARBA:ARBA00004141}; Multi-pass membrane protein {ECO:0000256   ARBA:ARBA00004141}

## Images



Dot blot analysis of Phospho-Ammonium transporter-T465 Antibody Phospho-specific Pab (Cat. #AP3770a) on nitrocellulose membrane. 50ng of Phospho-peptide or Non Phospho-peptide per dot were adsorbed. Antibody working concentrations are 0.6ug per ml.

Please note: All products are 'FOR RESEARCH USE ONLY. NOT FOR USE IN DIAGNOSTIC OR THERAPEUTIC PROCEDURES'.