

# Phospho-BAD(T137) Antibody

Affinity Purified Rabbit Polyclonal Antibody (Pab)

Catalog # AP3777h

## Product Information

---

<b>Application</b>	DB, E
<b>Primary Accession</b>	<a href="#">Q92934</a>
<b>Other Accession</b>	<a href="#">Q35147</a> , <a href="#">Q61337</a> , <a href="#">NP_004313.1</a>
<b>Reactivity</b>	Human
<b>Predicted</b>	Mouse, Rat
<b>Host</b>	Rabbit
<b>Clonality</b>	Polyclonal
<b>Isotype</b>	Rabbit IgG
<b>Clone Names</b>	RB39147
<b>Calculated MW</b>	18392

## Additional Information

---

<b>Gene ID</b>	572
<b>Other Names</b>	Bcl2-associated agonist of cell death, BAD, Bcl-2-binding component 6, Bcl-2-like protein 8, Bcl2-L-8, Bcl-xL/Bcl-2-associated death promoter, Bcl2 antagonist of cell death, BAD, BBC6, BCL2L8
<b>Target/Specificity</b>	This BAD Antibody is generated from rabbits immunized with a KLH conjugated synthetic phosphopeptide corresponding to amino acid residues surrounding T137 of human BAD.
<b>Dilution</b>	DB~~1:500 E~~Use at an assay dependent concentration.
<b>Format</b>	Purified polyclonal antibody supplied in PBS with 0.09% (W/V) sodium azide. This antibody is purified through a protein A column, followed by peptide affinity purification.
<b>Storage</b>	Maintain refrigerated at 2-8°C for up to 2 weeks. For long term storage store at -20°C in small aliquots to prevent freeze-thaw cycles.
<b>Precautions</b>	Phospho-BAD(T137) Antibody is for research use only and not for use in diagnostic or therapeutic procedures.

## Protein Information

---

<b>Name</b>	BAD
<b>Synonyms</b>	BBC6, BCL2L8

<b>Function</b>	Promotes cell death. Successfully competes for the binding to Bcl-X(L), Bcl-2 and Bcl-W, thereby affecting the level of heterodimerization of these proteins with BAX. Can reverse the death repressor activity of Bcl-X(L), but not that of Bcl-2 (By similarity). Appears to act as a link between growth factor receptor signaling and the apoptotic pathways.
<b>Cellular Location</b>	Mitochondrion outer membrane. Cytoplasm {ECO:0000250 UniProtKB:Q61337}. Note=Colocalizes with HIF3A in the cytoplasm (By similarity). Upon phosphorylation, locates to the cytoplasm. {ECO:0000250 UniProtKB:Q61337}
<b>Tissue Location</b>	Expressed in a wide variety of tissues.

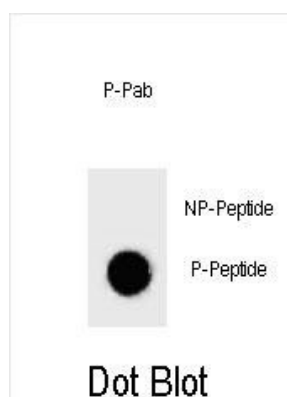
## Background

The protein encoded by this gene is a member of the BCL-2 family. BCL-2 family members are known to be regulators of programmed cell death. This protein positively regulates cell apoptosis by forming heterodimers with BCL-xL and BCL-2, and reversing their death repressor activity. Proapoptotic activity of this protein is regulated through its phosphorylation. Protein kinases AKT and MAP kinase, as well as protein phosphatase calcineurin were found to be involved in the regulation of this protein. Alternative splicing of this gene results in two transcript variants which encode the same isoform. [provided by RefSeq].

## References

Chen, B., et al. Am. J. Physiol., Cell Physiol. 299 (5), C968-C976 (2010) :  
Bailey, S.D., et al. Diabetes Care 33(10):2250-2253(2010)  
Galmiche, A., et al. Mol. Cancer Res. 8(8):1116-1125(2010)  
Cerioni, L., et al. Methods Mol. Biol. 648, 291-301 (2010) :  
Yu, B., et al. J. Exp. Clin. Cancer Res. 29, 107 (2010) :

## Images



Dot blot analysis of Phospho-BAD-T137 Antibody Phospho-specific Pab (Cat. #AP3777h) on nitrocellulose membrane. 50ng of Phospho-peptide or Non Phospho-peptide per dot were adsorbed. Antibody working concentrations are 0.6ug per ml.

Please note: All products are 'FOR RESEARCH USE ONLY. NOT FOR USE IN DIAGNOSTIC OR THERAPEUTIC PROCEDURES'.