

# Phospho-bcl-2(S70) Antibody

Affinity Purified Rabbit Polyclonal Antibody (Pab)

Catalog # AP3789a

## Product Information

---

Application	WB, DB, E
Primary Accession	<a href="#">P10415</a>
Other Accession	<a href="#">NP_000624.2</a>
Reactivity	Human
Host	Rabbit
Clonality	Polyclonal
Isotype	Rabbit IgG
Calculated MW	26266

## Additional Information

---

Gene ID	596
Other Names	Apoptosis regulator Bcl-2, BCL2
Target/Specificity	This bcl-2 Antibody is generated from rabbits immunized with a KLH conjugated synthetic phosphopeptide corresponding to amino acid residues surrounding S70 of human bcl-2.
Dilution	WB~~1:1000 DB~~1:500 E~~Use at an assay dependent concentration.
Format	Purified polyclonal antibody supplied in PBS with 0.09% (W/V) sodium azide. This antibody is purified through a protein A column, followed by peptide affinity purification.
Storage	Maintain refrigerated at 2-8°C for up to 2 weeks. For long term storage store at -20°C in small aliquots to prevent freeze-thaw cycles.
Precautions	Phospho-bcl-2(S70) Antibody is for research use only and not for use in diagnostic or therapeutic procedures.

## Protein Information

---

Name	BCL2
Function	Suppresses apoptosis in a variety of cell systems including factor-dependent lymphohematopoietic and neural cells (PubMed: <a href="#">1508712</a> , PubMed: <a href="#">8183370</a> ). Regulates cell death by controlling the mitochondrial membrane permeability (PubMed: <a href="#">11368354</a> ). Appears to function in a feedback loop system with caspases (PubMed: <a href="#">11368354</a> ). Inhibits caspase activity either by preventing the release of cytochrome c from the mitochondria and/or by binding to the

apoptosis-activating factor (APAF-1) (PubMed:[11368354](#)). Also acts as an inhibitor of autophagy: interacts with BECN1 and AMBRA1 during non-starvation conditions and inhibits their autophagy function (PubMed:[18570871](#), PubMed:[20889974](#), PubMed:[21358617](#)). May attenuate inflammation by impairing NLRP1- inflammasome activation, hence CASP1 activation and IL1B release (PubMed:[17418785](#)).

#### Cellular Location

Mitochondrion outer membrane; Single-pass membrane protein. Nucleus membrane; Single-pass membrane protein. Endoplasmic reticulum membrane; Single-pass membrane protein. Cytoplasm {ECO:0000250|UniProtKB:P10417}

#### Tissue Location

Expressed in a variety of tissues.

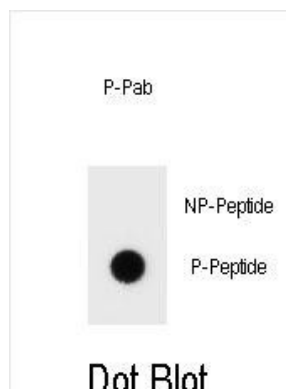
## Background

This gene encodes an integral outer mitochondrial membrane protein that blocks the apoptotic death of some cells such as lymphocytes. Constitutive expression of BCL2, such as in the case of translocation of BCL2 to Ig heavy chain locus, is thought to be the cause of follicular lymphoma. Two transcript variants, produced by alternate splicing, differ in their C-terminal ends. [provided by RefSeq].

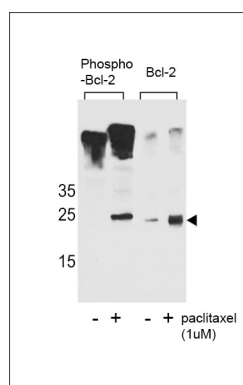
## References

Feng, H., et al. Cancer Cell 18(4):353-366(2010)  
 Azad, N., et al. Ann. N. Y. Acad. Sci. 1203, 1-6 (2010) :  
 Dubikov, A.I., et al. Scand. J. Rheumatol. 39(5):368-372(2010)  
 Yu, B., et al. J. Exp. Clin. Cancer Res. 29, 107 (2010) :  
 Trisciuglio, D., et al. PLoS ONE 5 (7), E11772 (2010) :

## Images



Dot blot analysis of Phospho-bcl-2-S70 Antibody Phospho-specific Pab (Cat. #AP3789a) on nitrocellulose membrane. 50ng of Phospho-peptide or Non Phospho-peptide per dot were adsorbed. Antibody working concentrations are 0.6ug per ml.



Western blot analysis of extracts from Jurkat cells, untreated or treated with paclitaxel, using phospho-Bcl2(Ser70)(left) or Bcl2 antibody(right).

Please note: All products are 'FOR RESEARCH USE ONLY. NOT FOR USE IN DIAGNOSTIC OR THERAPEUTIC PROCEDURES'.