

Acetyl-CALM1(K116) Antibody

Affinity Purified Rabbit Polyclonal Antibody (Pab)

Catalog # AP3807a

Product Information

Application	DB, E
Primary Accession	P62158
Other Accession	NP_001734.1
Reactivity	Human
Host	Rabbit
Clonality	Polyclonal
Isotype	Rabbit IgG
Clone Names	RB41697
Antigen Region	95-121

Additional Information

Other Names	Calmodulin, CaM, CALM1, CALM, CAM, CAM1
Target/Specificity	This Acetyl antibody is generated from rabbits immunized with a KLH conjugated synthetic peptide between 95-121 amino acids from human Acetyl.
Dilution	DB~~1:500 E~~Use at an assay dependent concentration.
Format	Purified polyclonal antibody supplied in PBS with 0.09% (W/V) sodium azide. This antibody is purified through a protein A column, followed by peptide affinity purification.
Storage	Maintain refrigerated at 2-8°C for up to 2 weeks. For long term storage store at -20°C in small aliquots to prevent freeze-thaw cycles.
Precautions	Acetyl-CALM1(K116) Antibody is for research use only and not for use in diagnostic or therapeutic procedures.

Protein Information

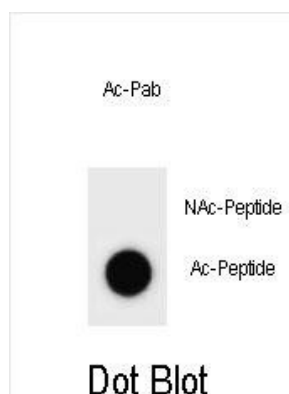
Background

Calmodulin mediates the control of a large number of enzymes and other proteins by Ca(2+). Among the enzymes to be stimulated by the calmodulin-Ca(2+) complex are a number of protein kinases and phosphatases. Together with CEP110 and centrin, is involved in a genetic pathway that regulates the centrosome cycle and progression through cytokinesis.

References

Bailey, S.D., et al. Diabetes Care 33(10):2250-2253(2010)
Mototani, H., et al. J. Bone Miner. Metab. 28(5):547-553(2010)
Rose, J.E., et al. Mol. Med. 16 (7-8), 247-253 (2010) :
Liu, Y.J., et al. Obesity (Silver Spring) (2010) In press :
Benaim, G., et al. Eur. J. Biochem. 269(15):3619-3631(2002)

Images



Dot blot analysis of CALM1 Antibody (Acetyl K116)
Acetyl-specific Pab (Cat. #AP3807a) on nitrocellulose
membrane. 50ng of Acetyl-peptide or Non Acetyl-peptide
per dot were adsorbed. Antibody working concentrations
are 0.6ug per ml.

Please note: All products are 'FOR RESEARCH USE ONLY. NOT FOR USE IN DIAGNOSTIC OR THERAPEUTIC PROCEDURES'.