

Phospho-mouse CCNB3(S286) Antibody

Affinity Purified Rabbit Polyclonal Antibody (Pab)

Catalog # AP3808a

Product Information

Application	DB, E
Primary Accession	Q810T2
Reactivity	Mouse
Host	Rabbit
Clonality	Polyclonal
Isotype	Rabbit IgG
Clone Names	RB42069
Calculated MW	158969

Additional Information

Other Names	G2/mitotic-specific cyclin-B3, Ccnb3, Cycb3
Target/Specificity	This mouse CCNB3 Antibody is generated from rabbits immunized with a KLH conjugated synthetic phosphopeptide corresponding to amino acid residues surrounding S286 of mouse CCNB3.
Dilution	DB~~1:500 E~~Use at an assay dependent concentration.
Format	Purified polyclonal antibody supplied in PBS with 0.09% (W/V) sodium azide. This antibody is purified through a protein A column, followed by peptide affinity purification.
Storage	Maintain refrigerated at 2-8°C for up to 2 weeks. For long term storage store at -20°C in small aliquots to prevent freeze-thaw cycles.
Precautions	Phospho-mouse CCNB3(S286) Antibody is for research use only and not for use in diagnostic or therapeutic procedures.

Protein Information

Name	Ccnb3
Synonyms	Cycb3
Function	Cyclins are positive regulatory subunits of the cyclin- dependent kinases (CDKs), and thereby play an essential role in the control of the cell cycle, notably via their destruction during cell division. Its tissue specificity suggest that it may be required during early meiotic prophase I (By similarity).
Cellular Location	Nucleus.

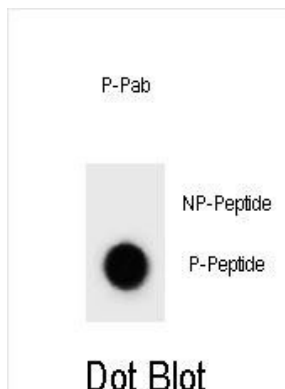
Tissue Location

Expressed in testis. Also expressed in the fetal ovary, but not in the adult.

Background

Cyclins are positive regulatory subunits of the cyclin-dependent kinases (CDKs), and thereby play an essential role in the control of the cell cycle, notably via their destruction during cell division. Its tissue specificity suggest that it may be required during early meiotic prophase I (By similarity).

Images



Dot blot analysis of mouse CCNB3 Antibody (Phospho S286) Phospho-specific Pab (Cat. #AP3808a) on nitrocellulose membrane. 50ng of Phospho-peptide or Non Phospho-peptide per dot were adsorbed. Antibody working concentrations are 0.6ug per ml.

Please note: All products are 'FOR RESEARCH USE ONLY. NOT FOR USE IN DIAGNOSTIC OR THERAPEUTIC PROCEDURES'.