

# Phospho-mouse CCNB3(T258) Antibody

Affinity Purified Rabbit Polyclonal Antibody (Pab)

Catalog # AP3810a

## Product Information

---

<b>Application</b>	DB, E
<b>Primary Accession</b>	<a href="#">Q810T2</a>
<b>Reactivity</b>	Mouse
<b>Host</b>	Rabbit
<b>Clonality</b>	Polyclonal
<b>Isotype</b>	Rabbit IgG
<b>Clone Names</b>	RB42073
<b>Calculated MW</b>	158969

## Additional Information

---

<b>Other Names</b>	G2/mitotic-specific cyclin-B3, Ccnb3, Cycb3
<b>Target/Specificity</b>	This mouse CCNB3 Antibody is generated from rabbits immunized with a KLH conjugated synthetic phosphopeptide corresponding to amino acid residues surrounding T258 of mouse CCNB3.
<b>Dilution</b>	DB~~1:500 E~~Use at an assay dependent concentration.
<b>Format</b>	Purified polyclonal antibody supplied in PBS with 0.09% (W/V) sodium azide. This antibody is purified through a protein A column, followed by peptide affinity purification.
<b>Storage</b>	Maintain refrigerated at 2-8°C for up to 2 weeks. For long term storage store at -20°C in small aliquots to prevent freeze-thaw cycles.
<b>Precautions</b>	Phospho-mouse CCNB3(T258) Antibody is for research use only and not for use in diagnostic or therapeutic procedures.

## Protein Information

---

<b>Name</b>	Ccnb3
<b>Synonyms</b>	Cycb3
<b>Function</b>	Cyclins are positive regulatory subunits of the cyclin- dependent kinases (CDKs), and thereby play an essential role in the control of the cell cycle, notably via their destruction during cell division. Its tissue specificity suggest that it may be required during early meiotic prophase I (By similarity).
<b>Cellular Location</b>	Nucleus.

**Tissue Location**

Expressed in testis. Also expressed in the fetal ovary, but not in the adult.

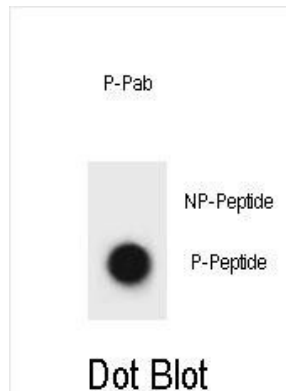
**Background**

---

Cyclins are positive regulatory subunits of the cyclin-dependent kinases (CDKs), and thereby play an essential role in the control of the cell cycle, notably via their destruction during cell division. Its tissue specificity suggest that it may be required during early meiotic prophase I (By similarity).

**Images**

---



Dot blot analysis of mouse CCNB3 Antibody (Phospho T258) Phospho-specific Pab (Cat. #AP3810a) on nitrocellulose membrane. 50ng of Phospho-peptide or Non Phospho-peptide per dot were adsorbed. Antibody working concentrations are 0.6ug per ml.

Please note: All products are 'FOR RESEARCH USE ONLY. NOT FOR USE IN DIAGNOSTIC OR THERAPEUTIC PROCEDURES'.