

# Phospho-PTEN(Y176) Antibody

Affinity Purified Rabbit Polyclonal Antibody (Pab)

Catalog # AP3858a

## Product Information

---

Application	DB, E
Primary Accession	<a href="#">P60484</a>
Other Accession	<a href="#">Q9PUT6</a> , <a href="#">O08586</a> , <a href="#">NP_000305.3</a>
Reactivity	Human
Predicted	Mouse, Xenopus
Host	Rabbit
Clonality	Polyclonal
Isotype	Rabbit IgG
Clone Names	RB39742
Calculated MW	47166

## Additional Information

---

Gene ID	5728
Other Names	Phosphatidylinositol 3, 5-trisphosphate 3-phosphatase and dual-specificity protein phosphatase PTEN, Mutated in multiple advanced cancers 1, Phosphatase and tensin homolog, PTEN, MMAC1, TEP1
Target/Specificity	This PTEN Antibody is generated from rabbits immunized with a KLH conjugated synthetic phosphopeptide corresponding to amino acid residues surrounding Y176 of human PTEN.
Dilution	DB~~1:500 E~~Use at an assay dependent concentration.
Format	Purified polyclonal antibody supplied in PBS with 0.09% (W/V) sodium azide. This antibody is purified through a protein A column, followed by peptide affinity purification.
Storage	Maintain refrigerated at 2-8°C for up to 2 weeks. For long term storage store at -20°C in small aliquots to prevent freeze-thaw cycles.
Precautions	Phospho-PTEN(Y176) Antibody is for research use only and not for use in diagnostic or therapeutic procedures.

## Protein Information

---

Name	PTEN
Synonyms	MMAC1, TEP1

<b>Function</b>	<p>Dual-specificity protein phosphatase, dephosphorylating tyrosine-, serine- and threonine-phosphorylated proteins (PubMed:<a href="#">9187108</a>, PubMed:<a href="#">9256433</a>, PubMed:<a href="#">9616126</a>). Also functions as a lipid phosphatase, removing the phosphate in the D3 position of the inositol ring of PtdIns(3,4,5)P3/phosphatidylinositol 3,4,5- trisphosphate, PtdIns(3,4)P2/phosphatidylinositol 3,4-diphosphate and PtdIns3P/phosphatidylinositol 3-phosphate with a preference for PtdIns(3,4,5)P3 (PubMed:<a href="#">16824732</a>, PubMed:<a href="#">26504226</a>, PubMed:<a href="#">9593664</a>, PubMed:<a href="#">9811831</a>). Furthermore, this enzyme can also act as a cytosolic inositol 3-phosphatase acting on Ins(1,3,4,5,6)P5/inositol 1,3,4,5,6 pentakisphosphate and possibly Ins(1,3,4,5)P4/1D-myo-inositol 1,3,4,5-tetrakisphosphate (PubMed:<a href="#">11418101</a>, PubMed:<a href="#">15979280</a>). Antagonizes the PI3K-AKT/PKB signaling pathway by dephosphorylating phosphoinositides and thereby modulating cell cycle progression and cell survival (PubMed:<a href="#">31492966</a>, PubMed:<a href="#">37279284</a>). The unphosphorylated form cooperates with MAGI2 to suppress AKT1 activation (PubMed:<a href="#">11707428</a>). In motile cells, suppresses the formation of lateral pseudopods and thereby promotes cell polarization and directed movement (PubMed:<a href="#">22279049</a>). Dephosphorylates tyrosine-phosphorylated focal adhesion kinase and inhibits cell migration and integrin-mediated cell spreading and focal adhesion formation (PubMed:<a href="#">22279049</a>). Required for growth factor-induced epithelial cell migration; growth factor stimulation induces PTEN phosphorylation which changes its binding preference from the p85 regulatory subunit of the PI3K kinase complex to DLC1 and results in translocation of the PTEN-DLC1 complex to the posterior of migrating cells to promote RHOA activation (PubMed:<a href="#">26166433</a>). Meanwhile, TNS3 switches binding preference from DLC1 to p85 and the TNS3-p85 complex translocates to the leading edge of migrating cells to activate RAC1 activation (PubMed:<a href="#">26166433</a>). Plays a role as a key modulator of the AKT-mTOR signaling pathway controlling the tempo of the process of newborn neurons integration during adult neurogenesis, including correct neuron positioning, dendritic development and synapse formation (By similarity). Involved in the regulation of synaptic function in excitatory hippocampal synapses. Recruited to the postsynaptic membrane upon NMDA receptor activation, is required for the modulation of synaptic activity during plasticity. Enhancement of lipid phosphatase activity is able to drive depression of AMPA receptor-mediated synaptic responses, activity required for NMDA receptor-dependent long-term depression (LTD) (By similarity). May be a negative regulator of insulin signaling and glucose metabolism in adipose tissue. The nuclear monoubiquitinated form possesses greater apoptotic potential, whereas the cytoplasmic nonubiquitinated form induces less tumor suppressive ability (PubMed:<a href="#">10468583</a>, PubMed:<a href="#">18716620</a>).</p>
<b>Cellular Location</b>	<p>Cytoplasm. Nucleus. Nucleus, PML body. Cell projection, dendritic spine {ECO:0000250 UniProtKB:O54857}. Postsynaptic density {ECO:0000250 UniProtKB:O54857}. Note=Monoubiquitinated form is nuclear Nonubiquitinated form is cytoplasmic. Colocalized with PML and USP7 in PML nuclear bodies (PubMed:18716620). XIAP/BIRC4 promotes its nuclear localization (PubMed:19473982). Associates with the postsynaptic density in response to NMDAR activation (By similarity) {ECO:0000250 UniProtKB:O54857, ECO:0000269 PubMed:18716620, ECO:0000269 PubMed:19473982}</p>
<b>Tissue Location</b>	<p>Expressed at a relatively high level in all adult tissues, including heart, brain, placenta, lung, liver, muscle, kidney and pancreas.</p>

## Background

This gene was identified as a tumor suppressor that is mutated in a large number of cancers at high

frequency. The protein encoded this gene is a phosphatidylinositol-3,4,5-trisphosphate 3-phosphatase. It contains a tensin like domain as well as a catalytic domain similar to that of the dual specificity protein tyrosine phosphatases. Unlike most of the protein tyrosine phosphatases, this protein preferentially dephosphorylates phosphoinositide substrates. It negatively regulates intracellular levels of phosphatidylinositol-3,4,5-trisphosphate in cells and functions as a tumor suppressor by negatively regulating AKT/PKB signaling pathway.

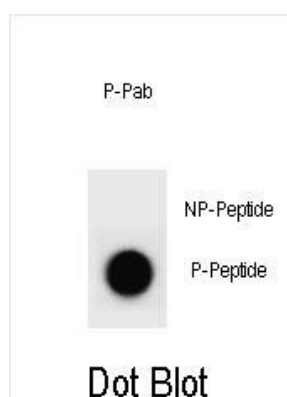
## References

---

Miletic, A.V., et al. J. Exp. Med. 207(11):2407-2420(2010)  
Kini, V., et al. J. Biol. Chem. 285(43):33082-33091(2010)  
Shimada, M., et al. Hum. Genet. 128(4):433-441(2010)  
Molina, J.R., et al. Cancer Res. 70(17):6697-6703(2010)  
Iliopoulos, D., et al. Mol. Cell 39(4):493-506(2010)

## Images

---



Dot blot analysis of PTEN Antibody (Phospho Y176)  
Phospho-specific Pab (Cat. #AP3858a) on nitrocellulose  
membrane. 50ng of Phospho-peptide or Non  
Phospho-peptide per dot were adsorbed. Antibody  
working concentrations are 0.6ug per ml.

Please note: All products are 'FOR RESEARCH USE ONLY. NOT FOR USE IN DIAGNOSTIC OR THERAPEUTIC PROCEDURES'.