

# Phospho-rat CCNB3(S283) Antibody

Affinity Purified Rabbit Polyclonal Antibody (Pab)

Catalog # AP3880a

## Product Information

---

Application	DB, E
Primary Accession	<a href="#">F1LVT0</a>
Reactivity	Rat
Host	Rabbit
Clonality	Polyclonal
Isotype	Rabbit IgG
Clone Names	RB42137
Calculated MW	159338

## Additional Information

---

Gene ID	317389
Other Names	Protein Ccnb3 ;Ccnb3;
Target/Specificity	This rat CCNB3 Antibody is generated from rabbits immunized with a KLH conjugated synthetic phosphopeptide corresponding to amino acid residues surrounding S283 of rat CCNB3.
Dilution	DB~~1:500 E~~Use at an assay dependent concentration.
Format	Purified polyclonal antibody supplied in PBS with 0.09% (W/V) sodium azide. This antibody is purified through a protein A column, followed by peptide affinity purification.
Storage	Maintain refrigerated at 2-8°C for up to 2 weeks. For long term storage store at -20°C in small aliquots to prevent freeze-thaw cycles.
Precautions	Phospho-rat CCNB3(S283) Antibody is for research use only and not for use in diagnostic or therapeutic procedures.

## Protein Information

---

Name	F1LVT0
Cellular Location	Nucleus {ECO:0000256 ARBA:ARBA00004123}.

## Background

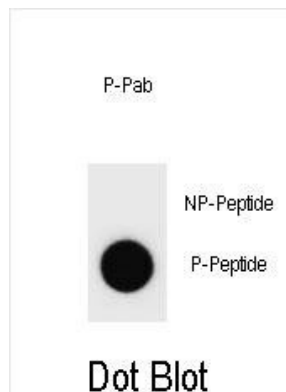
---

Cyclins are positive regulatory subunits of the cyclin-dependent kinases (CDKs), and thereby play an

essential role in the control of the cell cycle, notably via their destruction during cell division. Its tissue specificity suggest that it may be required during early meiotic prophase I (By similarity).

## Images

---



Dot blot analysis of Rat CCNB3 Antibody (Phospho S283) Phospho-specific Pab (Cat. #AP3880a) on nitrocellulose membrane. 50ng of Phospho-peptide or Non Phospho-peptide per dot were adsorbed. Antibody working concentrations are 0.6ug per ml.

Please note: All products are 'FOR RESEARCH USE ONLY. NOT FOR USE IN DIAGNOSTIC OR THERAPEUTIC PROCEDURES'.