

# Phospho-CCND3(S264) Antibody

Affinity Purified Rabbit Polyclonal Antibody (Pab)

Catalog # AP3885a

## Product Information

Application	DB, E
Primary Accession	<a href="#">P30281</a>
Other Accession	<a href="#">NP_001129489.1</a>
Reactivity	Human
Host	Rabbit
Clonality	Polyclonal
Isotype	Rabbit IgG
Clone Names	RB42160
Calculated MW	32520

## Additional Information

Gene ID	896
Other Names	G1/S-specific cyclin-D3, CCND3
Target/Specificity	This CCND3 Antibody is generated from rabbits immunized with a KLH conjugated synthetic phosphopeptide corresponding to amino acid residues surrounding S264 of human CCND3.
Dilution	DB~~1:500 E~~Use at an assay dependent concentration.
Format	Purified polyclonal antibody supplied in PBS with 0.09% (W/V) sodium azide. This antibody is purified through a protein A column, followed by peptide affinity purification.
Storage	Maintain refrigerated at 2-8°C for up to 2 weeks. For long term storage store at -20°C in small aliquots to prevent freeze-thaw cycles.
Precautions	Phospho-CCND3(S264) Antibody is for research use only and not for use in diagnostic or therapeutic procedures.

## Protein Information

Name	CCND3 {ECO:0000303   PubMed:1386336, ECO:0000312   HGNC:HGNC:1585}
Function	Regulatory component of the cyclin D3-CDK4 (DC) complex that phosphorylates and inhibits members of the retinoblastoma (RB) protein family including RB1 and regulates the cell-cycle during G(1)/S transition (PubMed: <a href="#">8114739</a> ). Phosphorylation of RB1 allows dissociation of the transcription factor E2F from the RB/E2F complex and the subsequent

transcription of E2F target genes which are responsible for the progression through the G(1) phase (PubMed:[8114739](#)). Hypophosphorylates RB1 in early G(1) phase (PubMed:[8114739](#)). Cyclin D- CDK4 complexes are major integrators of various mitogenic and antimitogenic signals (PubMed:[8114739](#)). Component of the ternary complex, cyclin D3/CDK4/CDKN1B, required for nuclear translocation and activity of the cyclin D-CDK4 complex (PubMed:[16782892](#)). Shows transcriptional coactivator activity with ATF5 independently of CDK4 (PubMed:[15358120](#)).

#### Cellular Location

Nucleus. Cytoplasm

## Background

---

The protein encoded by this gene belongs to the highly conserved cyclin family, whose members are characterized by a dramatic periodicity in protein abundance through the cell cycle. Cyclins function as regulators of CDK kinases. Different cyclins exhibit distinct expression and degradation patterns which contribute to the temporal coordination of each mitotic event. This cyclin forms a complex with and functions as a regulatory subunit of CDK4 or CDK6, whose activity is required for cell cycle G1/S transition. This protein has been shown to interact with and be involved in the phosphorylation of tumor suppressor protein Rb. The CDK4 activity associated with this cyclin was reported to be necessary for cell cycle progression through G2 phase into mitosis after UV radiation. Several transcript variants encoding different isoforms have been found for this gene.

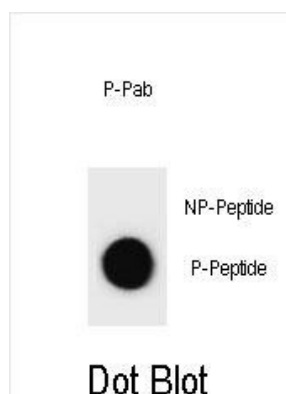
## References

---

Liu, C.Y., et al. Carcinogenesis 31(7):1259-1263(2010)  
Kim, J., et al. Cytokine 50(1):42-49(2010)  
Kamatani, Y., et al. Nat. Genet. 42(3):210-215(2010)  
Gumina, M.R., et al. Cell Cycle 9(4):820-828(2010)  
Radulovich, N., et al. Mol. Cancer 9, 24 (2010) :

## Images

---



Dot blot analysis of CCND3 Antibody (Phospho S264) Phospho-specific Pab (Cat. #AP3885a) on nitrocellulose membrane. 50ng of Phospho-peptide or Non Phospho-peptide per dot were adsorbed. Antibody working concentrations are 0.6ug per ml.

Please note: All products are 'FOR RESEARCH USE ONLY. NOT FOR USE IN DIAGNOSTIC OR THERAPEUTIC PROCEDURES'.