

Phospho-SSH3 (Ser37) Antibody

Purified Rabbit Polyclonal Antibody (Pab)

Catalog # AP3923a

Product Information

Application	WB, E
Primary Accession	Q8TE77
Reactivity	Human
Host	Rabbit
Clonality	polyclonal
Isotype	Rabbit IgG
Clone Names	RB56878
Calculated MW	72996

Additional Information

Gene ID	54961
Other Names	Protein phosphatase Slingshot homolog 3, 3.1.3.16, 3.1.3.48, SSH-like protein 3, SSH-3L, hSSH-3L, SSH3, SSH3L
Target/Specificity	This Phospho-SSH3 (Ser37) antibody is generated from a rabbit immunized with a KLH conjugated synthetic peptide between 10-43 amino acids from human SSH3.
Dilution	WB~~1:500 E~~Use at an assay dependent concentration.
Format	Purified polyclonal antibody supplied in PBS with 0.09% (W/V) sodium azide. This antibody is purified through a protein A column, followed by peptide affinity purification.
Storage	Maintain refrigerated at 2-8°C for up to 2 weeks. For long term storage store at -20°C in small aliquots to prevent freeze-thaw cycles.
Precautions	Phospho-SSH3 (Ser37) Antibody is for research use only and not for use in diagnostic or therapeutic procedures.

Protein Information

Name	SSH3
Synonyms	SSH3L
Function	Protein phosphatase which may play a role in the regulation of actin filament dynamics. Can dephosphorylate and activate the actin binding/depolymerizing factor cofilin, which subsequently binds to actin

filaments and stimulates their disassembly (By similarity).

Cellular Location

Cytoplasm, cytoskeleton. Nucleus

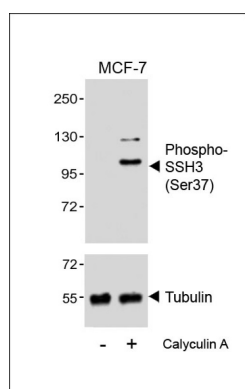
Background

Protein phosphatase which may play a role in the regulation of actin filament dynamics. Can dephosphorylate and activate the actin binding/depolymerizing factor cofilin, which subsequently binds to actin filaments and stimulates their disassembly (By similarity).

References

Niwa R.,et al.Cell 108:233-246(2002).
Ohta Y.,et al.Genes Cells 8:811-824(2003).
Ota T.,et al.Nat. Genet. 36:40-45(2004).
Matsuoka S.,et al.Science 316:1160-1166(2007).
Daub H.,et al.Mol. Cell 31:438-448(2008).

Images



Western blot analysis of lysates from MCF-7 cell line, untreated or treated with Calyculin A, 100nM, using (Cat. #AP3923a)(upper) or Tubulin (lower).

Please note: All products are 'FOR RESEARCH USE ONLY. NOT FOR USE IN DIAGNOSTIC OR THERAPEUTIC PROCEDURES'.