

RDH10 Antibody (Center)

Affinity Purified Rabbit Polyclonal Antibody (Pab)

Catalog # AP4738c

Product Information

Application	IHC-P, FC, WB, E
Primary Accession	Q8IZV5
Other Accession	Q80ZF7 , Q8VCH7 , Q8HZT6
Reactivity	Human, Rat, Mouse
Predicted	Bovine, Mouse, Rat
Host	Rabbit
Clonality	Polyclonal
Isotype	Rabbit IgG
Calculated MW	38087
Antigen Region	106-135

Additional Information

Gene ID	157506
Other Names	Retinol dehydrogenase 10, RDH10
Target/Specificity	This RDH10 antibody is generated from rabbits immunized with a KLH conjugated synthetic peptide between 106-135 amino acids from the Central region of human RDH10.
Dilution	IHC-P~~1:100~500 FC~~1:10~50 WB~~1:1000 E~~Use at an assay dependent concentration.
Format	Purified polyclonal antibody supplied in PBS with 0.09% (W/V) sodium azide. This antibody is purified through a protein A column, followed by peptide affinity purification.
Storage	Maintain refrigerated at 2-8°C for up to 2 weeks. For long term storage store at -20°C in small aliquots to prevent freeze-thaw cycles.
Precautions	RDH10 Antibody (Center) is for research use only and not for use in diagnostic or therapeutic procedures.

Protein Information

Name	RDH10
Synonyms	SDR16C4
Function	Retinol dehydrogenase with a clear preference for NADP. Converts

all-trans-retinol to all-trans-retinal. Has no detectable activity towards 11-cis-retinol, 9-cis-retinol and 13-cis-retinol.

Cellular Location

Microsome membrane; Single-pass membrane protein. Endoplasmic reticulum membrane; Single-pass membrane protein

Tissue Location

Detected in retina, kidney, liver, small intestine, placenta, lung, heart and skeletal muscle

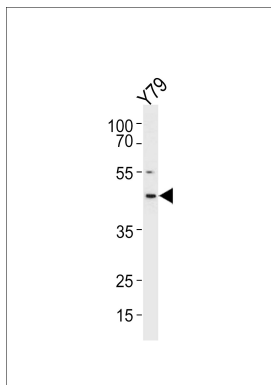
Background

RDH10 generates all-trans retinal from all-trans retinol and may play an important role in the photic visual cycle. All-trans retinal is isomerized to 11-cis retinal by the retinal G protein-coupled receptor (RGR; MIM 600342) when the retinal pigment epithelium (RPE) is illuminated.

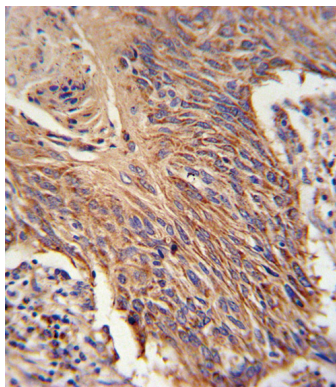
References

Bankovic, J., et al. Lung Cancer 67(2):151-159(2010)
Takahashi, Y., et al. Biochem. J. 419(1):113-122(2009)
Persson, B., et al. Chem. Biol. Interact. 178 (1-3), 94-98 (2009)

Images

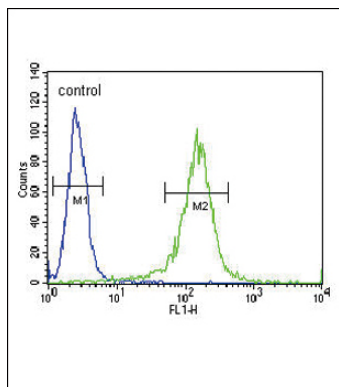


RDH10 Antibody (Center) (Cat. #AP4738c) western blot analysis in Y79 cell line lysates (35ug/lane). This demonstrates the RDH10 antibody detected the RDH10 protein (arrow).



RDH10 Antibody (Center) (Cat. #AP4738c) immunohistochemistry analysis in formalin fixed and paraffin embedded lung carcinoma followed by peroxidase conjugation of the secondary antibody and DAB staining. This data demonstrates the use of the RDH10 Antibody (Center) for immunohistochemistry. Clinical relevance has not been evaluated.

RDH10 Antibody (Center) (Cat. #AP4738c) flow cytometric analysis of NCI-H460 cells (right histogram) compared to a negative control cell (left histogram). FITC-conjugated goat-anti-rabbit secondary antibodies were used for the analysis.



Please note: All products are 'FOR RESEARCH USE ONLY. NOT FOR USE IN DIAGNOSTIC OR THERAPEUTIC PROCEDURES'.