

## SPRN Antibody (C-term)

Affinity Purified Rabbit Polyclonal Antibody (Pab)

Catalog # AP4754b

### Product Information

---

<b>Application</b>	IHC-P, WB, E
<b>Primary Accession</b>	<a href="#">Q5BIV9</a>
<b>Reactivity</b>	Human
<b>Host</b>	Rabbit
<b>Clonality</b>	Polyclonal
<b>Isotype</b>	Rabbit IgG
<b>Clone Names</b>	RB25483
<b>Calculated MW</b>	14522
<b>Antigen Region</b>	76-105

### Additional Information

---

<b>Gene ID</b>	503542
<b>Other Names</b>	Shadow of prion protein, Protein shadoo, SPRN, SHO
<b>Target/Specificity</b>	This SPRN antibody is generated from rabbits immunized with a KLH conjugated synthetic peptide between 76-105 amino acids from the C-terminal region of human SPRN.
<b>Dilution</b>	IHC-P~~1:100~500 WB~~1:1000 E~~Use at an assay dependent concentration.
<b>Format</b>	Purified polyclonal antibody supplied in PBS with 0.09% (W/V) sodium azide. This antibody is purified through a protein A column, followed by peptide affinity purification.
<b>Storage</b>	Maintain refrigerated at 2-8°C for up to 2 weeks. For long term storage store at -20°C in small aliquots to prevent freeze-thaw cycles.
<b>Precautions</b>	SPRN Antibody (C-term) is for research use only and not for use in diagnostic or therapeutic procedures.

### Protein Information

---

<b>Name</b>	SPRN
<b>Synonyms</b>	SHO
<b>Function</b>	Prion-like protein that has PrP(C)-like neuroprotective activity. May act as a modulator for the biological actions of normal and abnormal PrP (By similarity).

**Cellular Location**

Cell membrane; Lipid-anchor, GPI- anchor

**Tissue Location**

Mainly expressed in brain. In brain, it is expressed in hippocampus.

## Background

---

SPRN has PrP(C)-like neuroprotective activity. SPRN may act as a modulator for the biological actions of normal and abnormal PrP.

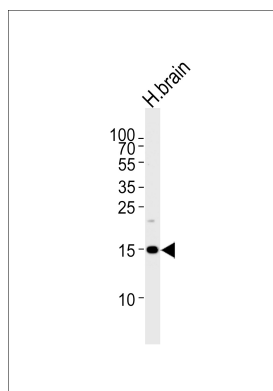
## References

---

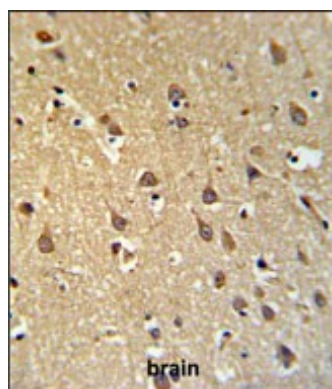
Beck, J.A., et al. J. Med. Genet. 45(12):813-817(2008)  
Van den Brulle, J., et al. BioTechniques 45(3):340-343(2008)  
Premzl, M., et al. Mol. Biol. Evol. 21(12):2210-2231(2004)

## Images

---



Western blot analysis of lysate from human brain tissue lysate, using SPRN Antibody (C-term)(Cat. #AP4754b). AP4754b was diluted at 1:1000 at each lane. A goat anti-rabbit IgG H&L(HRP) at 1:5000 dilution was used as the secondary antibody. Lysate at 35ug per lane.



SPRN Antibody (C-term) (Cat. #AP4754b) IHC analysis in formalin fixed and paraffin embedded brain tissue followed by peroxidase conjugation of the secondary antibody and DAB staining. This data demonstrates the use of the SPRN Antibody (C-term) for immunohistochemistry. Clinical relevance has not been evaluated.

## Citations

---

- [The Prion-like protein Shadoo is involved in mouse embryonic and mammary development and differentiation.](#)
- [The prion protein family member Shadoo induces spontaneous ionic currents in cultured cells.](#)
- [Expression of the prion protein family member Shadoo causes drug hypersensitivity that is diminished by the coexpression of the wild type prion protein.](#)

Please note: All products are 'FOR RESEARCH USE ONLY. NOT FOR USE IN DIAGNOSTIC OR THERAPEUTIC PROCEDURES'.