

CP054 Antibody (C-term)

Affinity Purified Rabbit Polyclonal Antibody (Pab)

Catalog # AP4759b

Product Information

Application	WB, FC, E
Primary Accession	Q6UWD8
Reactivity	Human
Host	Rabbit
Clonality	Polyclonal
Isotype	Rabbit IgG
Clone Names	RB25500
Calculated MW	24360
Antigen Region	170-198

Additional Information

Gene ID	283897
Other Names	Transmembrane protein C16orf54, C16orf54
Target/Specificity	This CP054 antibody is generated from rabbits immunized with a KLH conjugated synthetic peptide between 170-198 amino acids from the C-terminal region of human CP054.
Dilution	WB~~1:1000 FC~~1:10~50 E~~Use at an assay dependent concentration.
Format	Purified polyclonal antibody supplied in PBS with 0.09% (W/V) sodium azide. This antibody is purified through a protein A column, followed by peptide affinity purification.
Storage	Maintain refrigerated at 2-8°C for up to 2 weeks. For long term storage store at -20°C in small aliquots to prevent freeze-thaw cycles.
Precautions	CP054 Antibody (C-term) is for research use only and not for use in diagnostic or therapeutic procedures.

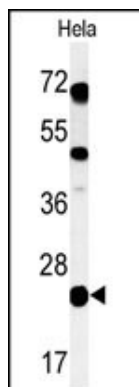
Protein Information

Name	C16orf54
Cellular Location	Membrane; Single-pass membrane protein

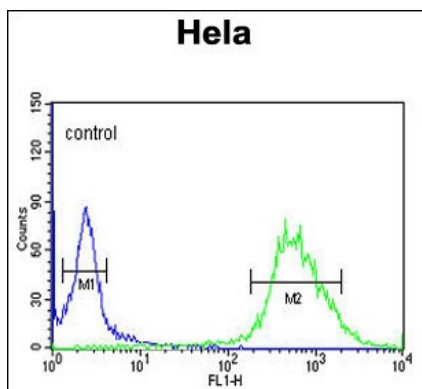
References

Clark, H.F., et al. Genome Res. 13(10):2265-2270(2003)
Venter, J.C., et al. Science 291(5507):1304-1351(2001)
Loftus, B.J., et al. Genomics 60(3):295-308(1999)

Images



Western blot analysis of CP054 Antibody (C-term) (Cat. #AP4759b) in HeLa cell line lysates (35ug/lane). CP054 (arrow) was detected using the purified Pab.



CP054 Antibody (C-term) (Cat. #AP4759b) flow cytometric analysis of HeLa cells (right histogram) compared to a negative control cell (left histogram). FITC-conjugated goat-anti-rabbit secondary antibodies were used for the analysis.

Please note: All products are 'FOR RESEARCH USE ONLY. NOT FOR USE IN DIAGNOSTIC OR THERAPEUTIC PROCEDURES'.