

# TOR1B Antibody (Center)

Affinity Purified Rabbit Polyclonal Antibody (Pab)

Catalog # AP4771c

## Product Information

---

Application	WB, E
Primary Accession	<a href="#">O14657</a>
Reactivity	Human, Mouse
Host	Rabbit
Clonality	Polyclonal
Isotype	Rabbit IgG
Clone Names	RB25717
Calculated MW	37979
Antigen Region	210-237

## Additional Information

---

Gene ID	27348
Other Names	Torsin-1B, Torsin ATPase-1B, 364-, Torsin family 1 member B, TOR1B, DQ1
Target/Specificity	This TOR1B antibody is generated from rabbits immunized with a KLH conjugated synthetic peptide between 210-237 amino acids from the Central region of human TOR1B.
Dilution	WB~~1:1000 E~~Use at an assay dependent concentration.
Format	Purified polyclonal antibody supplied in PBS with 0.09% (W/V) sodium azide. This antibody is purified through a protein A column, followed by peptide affinity purification.
Storage	Maintain refrigerated at 2-8°C for up to 2 weeks. For long term storage store at -20°C in small aliquots to prevent freeze-thaw cycles.
Precautions	TOR1B Antibody (Center) is for research use only and not for use in diagnostic or therapeutic procedures.

## Protein Information

---

Name	TOR1B
Synonyms	DQ1
Function	May serve as a molecular chaperone assisting in the proper folding of secreted and/or membrane proteins. Plays a role in non- neural cells nuclear envelope and endoplasmic reticulum integrity. May have a redundant

function with TOR1A in non-neural tissues.

**Cellular Location**

Endoplasmic reticulum lumen. Nucleus membrane

**Tissue Location**

Widely expressed with low levels in brain.

## Background

---

TOR1B may serve as a molecular chaperone assisting in the proper folding of secreted and/or membrane proteins.

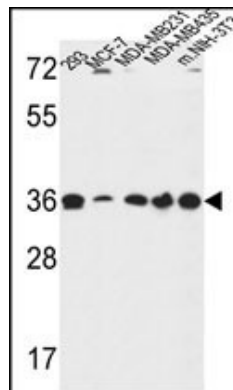
## References

---

Kamm, C., et al. Neurology 67(10):1857-1859(2006)  
Bahn, E., et al. Brain Res. 1116(1):112-119(2006)  
Hewett, J.W., et al. J. Neurochem. 89(5):1186-1194(2004)

## Images

---



TOR1B Antibody (Center) (Cat. #AP4771c) western blot analysis in 293, MCF-7, MDA-MB231, MDA-MB435, and mouse NIH-3T3 cell line lysates (35ug/lane). This demonstrates the TOR1B antibody detected the TOR1B protein (arrow).

Please note: All products are 'FOR RESEARCH USE ONLY. NOT FOR USE IN DIAGNOSTIC OR THERAPEUTIC PROCEDURES'.