

SEC24C Antibody (Center)

Affinity Purified Rabbit Polyclonal Antibody (Pab)

Catalog # AP4773c

Product Information

Application	WB, E
Primary Accession	P53992
Reactivity	Human
Host	Rabbit
Clonality	Polyclonal
Isotype	Rabbit IgG
Clone Names	RB25740
Calculated MW	118325
Antigen Region	443-470

Additional Information

Gene ID	9632
Other Names	Protein transport protein Sec24C, SEC24-related protein C, SEC24C, KIAA0079
Target/Specificity	This SEC24C antibody is generated from rabbits immunized with a KLH conjugated synthetic peptide between 443-470 amino acids from the Central region of human SEC24C.
Dilution	WB~~1:1000 E~~Use at an assay dependent concentration.
Format	Purified polyclonal antibody supplied in PBS with 0.09% (W/V) sodium azide. This antibody is purified through a protein A column, followed by peptide affinity purification.
Storage	Maintain refrigerated at 2-8°C for up to 2 weeks. For long term storage store at -20°C in small aliquots to prevent freeze-thaw cycles.
Precautions	SEC24C Antibody (Center) is for research use only and not for use in diagnostic or therapeutic procedures.

Protein Information

Name	SEC24C (HGNC:10705)
Function	Component of the coat protein complex II (COPII) which promotes the formation of transport vesicles from the endoplasmic reticulum (ER). The coat has two main functions, the physical deformation of the endoplasmic reticulum membrane into vesicles and the selection of cargo molecules for their transport to the Golgi complex (PubMed: 10214955 , PubMed: 17499046 ,

PubMed:[18843296](#), PubMed:[20427317](#)). Plays a central role in cargo selection within the COPII complex and together with SEC24D may have a different specificity compared to SEC24A and SEC24B (PubMed:[17499046](#), PubMed:[18843296](#), PubMed:[20427317](#)). May more specifically package GPI-anchored proteins through the cargo receptor TMED10 (PubMed:[20427317](#)). May also be specific for IxM motif- containing cargos like the SNAREs GOSR2 and STX5 (PubMed:[18843296](#)).

Cellular Location

Cytoplasmic vesicle, COPII-coated vesicle membrane; Peripheral membrane protein; Cytoplasmic side. Endoplasmic reticulum membrane; Peripheral membrane protein; Cytoplasmic side. Cytoplasm, cytosol

Tissue Location

Ubiquitous..

Background

SEC24C is a member of the SEC24 subfamily of the SEC23/SEC24 family, which is involved in vesicle trafficking. The encoded protein has similarity to yeast Sec24p component of COPII. COPII is the coat protein complex responsible for vesicle budding from the ER. The product of this gene may play a role in shaping the vesicle, as well as in cargo selection and concentration.

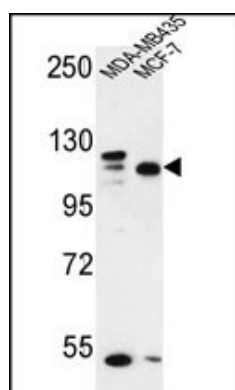
References

Stagg, S.M., et al. Cell 134(3):474-484(2008)

Yamayoshi, S., et al. Cell Host Microbe 3(3):168-177(2008)

Morgan, A.R., et al. Am. J. Med. Genet. B Neuropsychiatr. Genet. 144B (6), 762-770 (2007)

Images



SEC24C Antibody (Center) (Cat. #AP4773c) western blot analysis in MDA-MB435, MCF-7 cell line lysates (35ug/lane). This demonstrates the SEC24C antibody detected the SEC24C protein (arrow).

Please note: All products are 'FOR RESEARCH USE ONLY. NOT FOR USE IN DIAGNOSTIC OR THERAPEUTIC PROCEDURES'.