

# CORO6 Antibody (C-term)

Affinity Purified Rabbit Polyclonal Antibody (Pab)

Catalog # AP4832b

## Product Information

---

<b>Application</b>	WB, IHC-P, E
<b>Primary Accession</b>	<a href="#">Q6QEF8</a>
<b>Other Accession</b>	<a href="#">Q920J3</a> , <a href="#">Q920M5</a> , <a href="#">Q9WUM4</a> , <a href="#">Q9ULV4</a> , <a href="#">O89046</a> , <a href="#">Q9XS70</a> , <a href="#">Q9WUM3</a> , <a href="#">Q9BR76</a>
<b>Reactivity</b>	Human, Mouse
<b>Predicted</b>	Rabbit, Rat
<b>Host</b>	Rabbit
<b>Clonality</b>	Polyclonal
<b>Isotype</b>	Rabbit IgG
<b>Clone Names</b>	RB25514
<b>Calculated MW</b>	52762
<b>Antigen Region</b>	337-365

## Additional Information

---

<b>Gene ID</b>	84940
<b>Other Names</b>	Coronin-6, Coronin-like protein E, Clipin-E, CORO6
<b>Target/Specificity</b>	This CORO6 antibody is generated from rabbits immunized with a KLH conjugated synthetic peptide between 337-365 amino acids from the C-terminal region of human CORO6.
<b>Dilution</b>	WB~~1:1000 IHC-P~~1:100~500 E~~Use at an assay dependent concentration.
<b>Format</b>	Purified polyclonal antibody supplied in PBS with 0.09% (W/V) sodium azide. This antibody is purified through a protein A column, followed by peptide affinity purification.
<b>Storage</b>	Maintain refrigerated at 2-8°C for up to 2 weeks. For long term storage store at -20°C in small aliquots to prevent freeze-thaw cycles.
<b>Precautions</b>	CORO6 Antibody (C-term) is for research use only and not for use in diagnostic or therapeutic procedures.

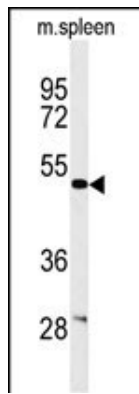
## Protein Information

---

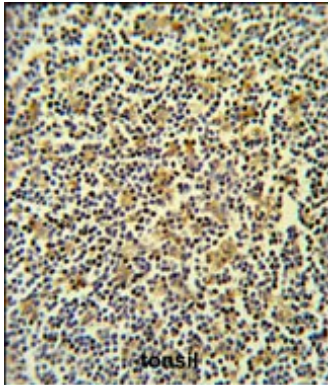
<b>Name</b>	CORO6
-------------	-------

## Images

---



Western blot analysis of CORO6 Antibody (C-term) (Cat. #AP4832b) in mouse spleen tissue lysates (35ug/lane). CORO6 (arrow) was detected using the purified Pab.



CORO6 Antibody (C-term) (Cat. #AP4832b) IHC analysis in formalin fixed and paraffin embedded lymph carcinoma followed by peroxidase conjugation of the secondary antibody and DAB staining. This data demonstrates the use of the CORO6 Antibody (C-term) for immunohistochemistry. Clinical relevance has not been evaluated.

Please note: All products are 'FOR RESEARCH USE ONLY. NOT FOR USE IN DIAGNOSTIC OR THERAPEUTIC PROCEDURES'.