

CORO6 Antibody (Center)

Affinity Purified Rabbit Polyclonal Antibody (Pab)

Catalog # AP4832c

Product Information

Application	WB, IHC-P, FC, E
Primary Accession	Q6QEF8
Other Accession	NP_116243.2
Reactivity	Human, Mouse
Host	Rabbit
Clonality	Polyclonal
Isotype	Rabbit IgG
Clone Names	RB27273
Calculated MW	52762
Antigen Region	196-224

Additional Information

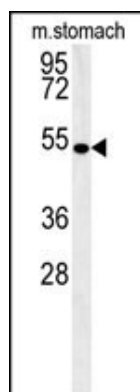
Gene ID	84940
Other Names	Coronin-6, Coronin-like protein E, Clipin-E, CORO6
Target/Specificity	This CORO6 antibody is generated from rabbits immunized with a KLH conjugated synthetic peptide between 196-224 amino acids from the Central region of human CORO6.
Dilution	WB~~1:1000 IHC-P~~1:100~500 FC~~1:10~50 E~~Use at an assay dependent concentration.
Format	Purified polyclonal antibody supplied in PBS with 0.09% (W/V) sodium azide. This antibody is purified through a protein A column, followed by peptide affinity purification.
Storage	Maintain refrigerated at 2-8°C for up to 2 weeks. For long term storage store at -20°C in small aliquots to prevent freeze-thaw cycles.
Precautions	CORO6 Antibody (Center) is for research use only and not for use in diagnostic or therapeutic procedures.

Protein Information

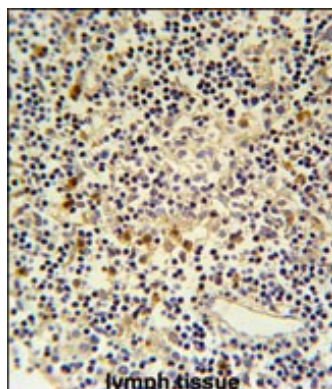
Name	CORO6
-------------	-------

References

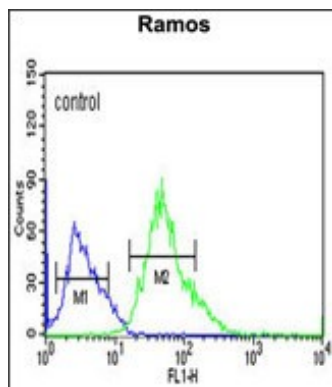
Images



CORO6 Antibody (Center) (Cat. #AP4832c) western blot analysis in mouse stomach tissue lysates (15ug/lane). This demonstrates the CORO6 antibody detected CORO6 protein (arrow).



CORO6 Antibody (Center) (Cat. #AP4832c) immunohistochemistry analysis in formalin fixed and paraffin embedded human lymph tissue followed by peroxidase conjugation of the secondary antibody and DAB staining. This data demonstrates the use of the CORO6 Antibody (Center) for immunohistochemistry. Clinical relevance has not been evaluated.



CORO6 Antibody (Center) (Cat. #AP4832c) flow cytometric analysis of Ramos cells (right histogram) compared to a negative control cell (left histogram). FITC-conjugated goat-anti-rabbit secondary antibodies were used for the analysis.

Please note: All products are 'FOR RESEARCH USE ONLY. NOT FOR USE IN DIAGNOSTIC OR THERAPEUTIC PROCEDURES'.