

ZCH24 Antibody (C-term)

Affinity Purified Rabbit Polyclonal Antibody (Pab)

Catalog # AP4843b

Product Information

Application	WB, IHC-P, E
Primary Accession	Q8N2G6
Other Accession	B2RVL6 , Q8H XK7
Reactivity	Human, Hamster
Predicted	Monkey, Mouse
Host	Rabbit
Clonality	Polyclonal
Isotype	Rabbit IgG
Clone Names	RB25672
Calculated MW	26955
Antigen Region	136-165

Additional Information

Gene ID	219654
Other Names	Zinc finger CCHC domain-containing protein 24, ZCCHC24, C10orf56
Target/Specificity	This ZCH24 antibody is generated from rabbits immunized with a KLH conjugated synthetic peptide between 136-165 amino acids from the C-terminal region of human ZCH24.
Dilution	WB~~1:1000 IHC-P~~1:100~500 E~~Use at an assay dependent concentration.
Format	Purified polyclonal antibody supplied in PBS with 0.09% (W/V) sodium azide. This antibody is purified through a protein A column, followed by peptide affinity purification.
Storage	Maintain refrigerated at 2-8°C for up to 2 weeks. For long term storage store at -20°C in small aliquots to prevent freeze-thaw cycles.
Precautions	ZCH24 Antibody (C-term) is for research use only and not for use in diagnostic or therapeutic procedures.

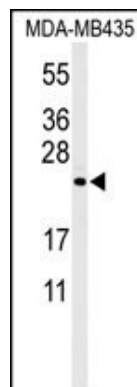
Protein Information

Name	ZCCHC24
Synonyms	C10orf56

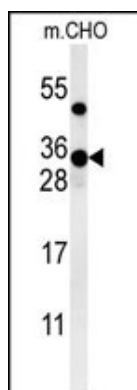
References

Olsen, J.V., et al. Cell 127(3):635-648(2006)
Grupe, A., et al. Am. J. Hum. Genet. 78(1):78-88(2006)
Deloukas, P., et al. Nature 429(6990):375-381(2004)

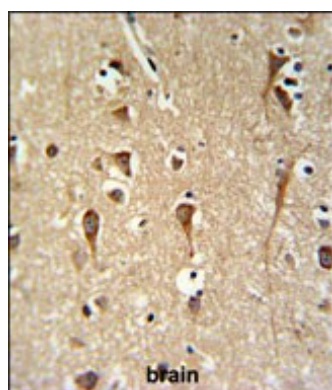
Images



Western blot analysis of ZCH24 Antibody (C-term) (Cat. #AP4843b) in MDA-MB435 cell line lysates (35ug/lane). ZCH24 (arrow) was detected using the purified Pab.



Western blot analysis of ZCH24 Antibody (C-term) (Cat. #AP4843b) in CHO cell line lysates (35ug/lane). ZCH24 (arrow) was detected using the purified Pab.



ZCH24 Antibody (C-term) (Cat. #AP4843b) IHC analysis in formalin fixed and paraffin embedded brain tissue followed by peroxidase conjugation of the secondary antibody and DAB staining. This data demonstrates the use of the ZCH24 Antibody (C-term) for immunohistochemistry. Clinical relevance has not been evaluated.

Please note: All products are 'FOR RESEARCH USE ONLY. NOT FOR USE IN DIAGNOSTIC OR THERAPEUTIC PROCEDURES'.