

# SETD6 Antibody (C-term)

Affinity Purified Rabbit Polyclonal Antibody (Pab)

Catalog # AP4848b

## Product Information

---

Application	WB, IHC-P, E
Primary Accession	<a href="#">Q8TBK2</a>
Reactivity	Human
Host	Rabbit
Clonality	Polyclonal
Isotype	Rabbit IgG
Clone Names	RB25905
Calculated MW	53189
Antigen Region	310-338

## Additional Information

---

Gene ID	79918
Other Names	N-lysine methyltransferase SETD6, 211-, SET domain-containing protein 6, SETD6
Target/Specificity	This SETD6 antibody is generated from rabbits immunized with a KLH conjugated synthetic peptide between 310-338 amino acids from the C-terminal region of human SETD6.
Dilution	WB~~1:1000 IHC-P~~1:100~500 E~~Use at an assay dependent concentration.
Format	Purified polyclonal antibody supplied in PBS with 0.09% (W/V) sodium azide. This antibody is purified through a protein A column, followed by peptide affinity purification.
Storage	Maintain refrigerated at 2-8°C for up to 2 weeks. For long term storage store at -20°C in small aliquots to prevent freeze-thaw cycles.
Precautions	SETD6 Antibody (C-term) is for research use only and not for use in diagnostic or therapeutic procedures.

## Protein Information

---

Name	SETD6 {ECO:0000303   PubMed:21515635, ECO:0000312   HGNC:HGNC:26116}
Function	Protein-lysine N-methyltransferase. Monomethylates 'Lys-310' of the RELA subunit of NF-kappa-B complex, leading to down-regulation of NF-kappa-B transcription factor activity (PubMed: <a href="#">21131967</a> , PubMed: <a href="#">21515635</a> ,

PubMed:[30189201](#)). Monomethylates 'Lys-8' of H2AZ (H2AZK8me1) (PubMed:[23324626](#)). Required for the maintenance of embryonic stem cell self-renewal (By similarity). Methylates PAK4.

**Cellular Location**

Nucleus.

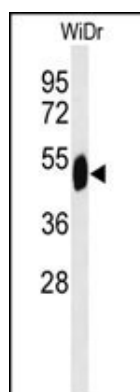
## References

---

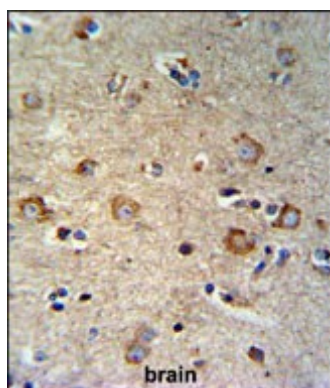
Kimura, K., et al. Genome Res. 16(1):55-65(2006)  
Gerhard, D.S., et al. Genome Res. 14 (10B), 2121-2127 (2004)  
Suzuki, Y., et al. Genome Res. 14(9):1711-1718(2004)

## Images

---



Western blot analysis of SETD6 Antibody (C-term) (Cat. #AP4848b) in WiDr cell line lysates (35ug/lane). SETD6 (arrow) was detected using the purified Pab.



SETD6 Antibody (C-term) (Cat. #AP4848b) IHC analysis in formalin fixed and paraffin embedded brain tissue followed by peroxidase conjugation of the secondary antibody and DAB staining. This data demonstrates the use of the SETD6 Antibody (C-term) for immunohistochemistry. Clinical relevance has not been evaluated.

Please note: All products are 'FOR RESEARCH USE ONLY. NOT FOR USE IN DIAGNOSTIC OR THERAPEUTIC PROCEDURES'.