

ISLR Antibody (C-term)

Affinity Purified Rabbit Polyclonal Antibody (Pab)

Catalog # AP4877b

Product Information

| | |
|--------------------------|------------------------|
| Application | IHC-P, FC, WB, E |
| Primary Accession | O14498 |
| Reactivity | Human |
| Host | Rabbit |
| Clonality | Polyclonal |
| Isotype | Rabbit IgG |
| Clone Names | RB22277 |
| Calculated MW | 45997 |
| Antigen Region | 333-362 |

Additional Information

| | |
|---------------------------|--|
| Gene ID | 3671 |
| Other Names | Immunoglobulin superfamily containing leucine-rich repeat protein, ISLR |
| Target/Specificity | This ISLR antibody is generated from rabbits immunized with a KLH conjugated synthetic peptide between 333-362 amino acids from the C-terminal region of human ISLR. |
| Dilution | IHC-P~~1:100~500 FC~~1:10~50 WB~~1:1000 E~~Use at an assay dependent concentration. |
| Format | Purified polyclonal antibody supplied in PBS with 0.09% (W/V) sodium azide. This antibody is purified through a protein A column, followed by peptide affinity purification. |
| Storage | Maintain refrigerated at 2-8°C for up to 2 weeks. For long term storage store at -20°C in small aliquots to prevent freeze-thaw cycles. |
| Precautions | ISLR Antibody (C-term) is for research use only and not for use in diagnostic or therapeutic procedures. |

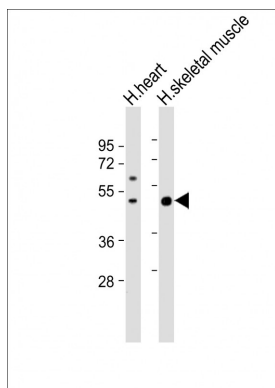
Protein Information

| | |
|--------------------------|---|
| Name | ISLR |
| Cellular Location | Secreted. |
| Tissue Location | Expressed in various tissues including retina, heart, skeletal muscle, prostate, ovary, small intestine, thyroid, adrenal cortex, testis, stomach and spinal cord |

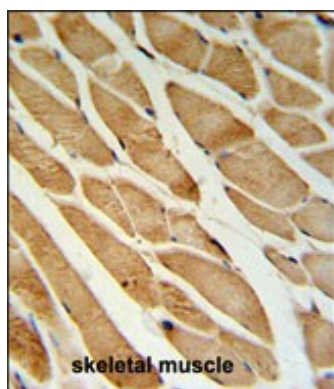
References

Clark, H.F., et al. Genome Res. 13(10):2265-2270(2003)
Nagasawa, A., et al. Genomics 61(1):37-43(1999)
Nagasawa, A., et al. Genomics 44(3):273-279(1997)

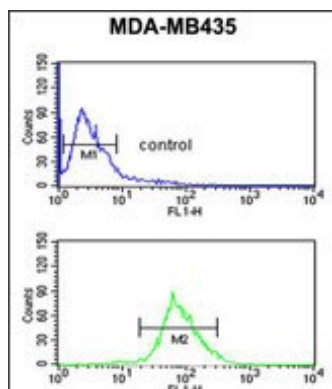
Images



All lanes : Anti-ISLR Antibody (C-term) at 1:1000 dilution
Lane 1: human heart lysate Lane 2: human skeletal muscle lysate Lysates/proteins at 20 µg per lane.
Secondary Goat Anti-Rabbit IgG, (H+L), Peroxidase conjugated at 1/10000 dilution. Predicted band size : 46 kDa Blocking/Dilution buffer: 5% NFDM/TBST.



ISLR Antibody (C-term) (Cat. #AP4877b) IHC analysis in formalin fixed and paraffin embedded skeletal muscle followed by peroxidase conjugation of the secondary antibody and DAB staining. This data demonstrates the use of the ISLR Antibody (C-term) for immunohistochemistry. Clinical relevance has not been evaluated.



ISLR Antibody (C-term) (Cat. #AP4877b) flow cytometric analysis of MDA-MB435 cells (bottom histogram) compared to a negative control cell (top histogram). FITC-conjugated goat-anti-rabbit secondary antibodies were used for the analysis.

Please note: All products are 'FOR RESEARCH USE ONLY. NOT FOR USE IN DIAGNOSTIC OR THERAPEUTIC PROCEDURES'.