

MILK2 Antibody (C-term)

Affinity Purified Rabbit Polyclonal Antibody (Pab)

Catalog # AP4901b

Product Information

Application	WB, IHC-P, FC, E
Primary Accession	Q8IY33
Reactivity	Human, Rat, Mouse
Host	Rabbit
Clonality	Polyclonal
Isotype	Rabbit IgG
Clone Names	RB25630
Calculated MW	97502
Antigen Region	841-870

Additional Information

Gene ID	79778
Other Names	MICAL-like protein 2, Junctional Rab13-binding protein, Molecule interacting with CasL-like 2, MICAL-L2, MICALL2, JRAB
Target/Specificity	This MILK2 antibody is generated from rabbits immunized with a KLH conjugated synthetic peptide between 841-870 amino acids from the C-terminal region of human MILK2.
Dilution	WB~~1:1000 IHC-P~~1:100~500 FC~~1:10~50 E~~Use at an assay dependent concentration.
Format	Purified polyclonal antibody supplied in PBS with 0.09% (W/V) sodium azide. This antibody is purified through a protein A column, followed by peptide affinity purification.
Storage	Maintain refrigerated at 2-8°C for up to 2 weeks. For long term storage store at -20°C in small aliquots to prevent freeze-thaw cycles.
Precautions	MILK2 Antibody (C-term) is for research use only and not for use in diagnostic or therapeutic procedures.

Protein Information

Name	MICALL2 (HGNC:29672)
Synonyms	JRAB
Function	Effector of small Rab GTPases which is involved in junctional complexes

assembly through the regulation of cell adhesion molecules transport to the plasma membrane and actin cytoskeleton reorganization. Regulates the endocytic recycling of occludins, claudins and E-cadherin to the plasma membrane and may thereby regulate the establishment of tight junctions and adherens junctions. In parallel, may regulate actin cytoskeleton reorganization directly through interaction with F-actin or indirectly through actinins and filamins. Most probably involved in the processes of epithelial cell differentiation, cell spreading and neurite outgrowth (By similarity). Undergoes liquid-liquid phase separation to form tubular recycling endosomes. Plays 2 sequential roles in the biogenesis of tubular recycling endosomes: first organizes phase separation and then the closed form formed by interaction with RAB8A promotes endosomal tubulation (By similarity).

Cellular Location

Cell membrane {ECO:0000250|UniProtKB:Q3TN34}; Peripheral membrane protein {ECO:0000250|UniProtKB:Q3TN34}. Cell junction, tight junction {ECO:0000250|UniProtKB:Q3TN34}. Recycling endosome {ECO:0000250|UniProtKB:Q3TN34}. Cell projection {ECO:0000250|UniProtKB:Q3TN34}. Cytoplasm, cytoskeleton {ECO:0000250|UniProtKB:Q3TN34}

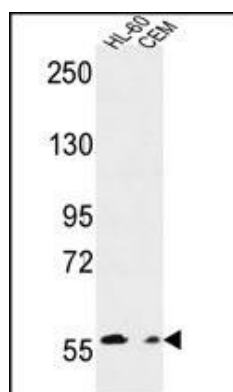
Background

MILK2 may be a cytoskeletal regulator.

References

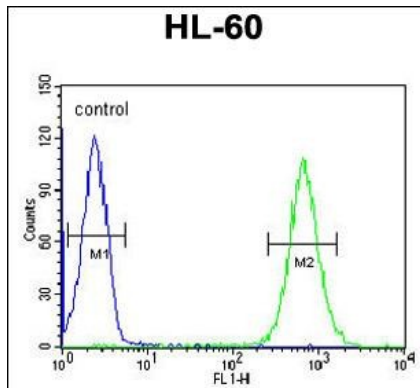
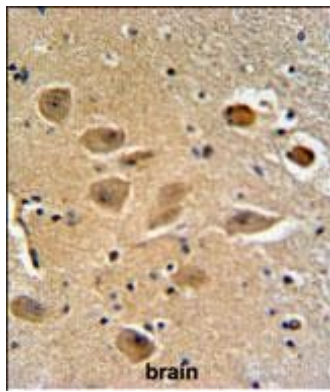
Kanda, I., et al. Oncogene 27(12):1687-1695(2008)
Terai, T., et al. Mol. Biol. Cell 17(5):2465-2475(2006)
Clark, H.F., et al. Genome Res. 13(10):2265-2270(2003)
Terman, J.R., et al. Cell 109(7):887-900(2002)

Images



MILK2 Antibody (C-term) (Cat. #AP4901b) western blot analysis in HL-60,CEM cell line lysates (35ug/lane).This demonstrates the MILK2 antibody detected the MILK2 protein (arrow).

MILK2 Antibody (C-term) (Cat. #AP4901b) IHC analysis in formalin fixed and paraffin embedded human brain tissue followed by peroxidase conjugation of the secondary antibody and DAB staining. This data demonstrates the use of the MILK2 Antibody (C-term) for immunohistochemistry. Clinical relevance has not been evaluated.



MILK2 Antibody (C-term) (Cat. #AP4901b) flow cytometric analysis of HL-60 cells (right histogram) compared to a negative control cell (left histogram). FITC-conjugated goat-anti-rabbit secondary antibodies were used for the analysis.

Please note: All products are 'FOR RESEARCH USE ONLY. NOT FOR USE IN DIAGNOSTIC OR THERAPEUTIC PROCEDURES'.