

PAH Antibody (Center)

Affinity Purified Rabbit Polyclonal Antibody (Pab)

Catalog # AP4918c

Product Information

Application	WB, E
Primary Accession	P00439
Other Accession	P04176 , P16331 , Q2KIH7
Reactivity	Human, Mouse
Predicted	Bovine, Rat
Host	Rabbit
Clonality	Polyclonal
Isotype	Rabbit IgG
Clone Names	RB24519
Calculated MW	51862
Antigen Region	132-161

Additional Information

Gene ID	5053
Other Names	Phenylalanine-4-hydroxylase, PAH, Phe-4-monooxygenase, PAH
Target/Specificity	This PAH antibody is generated from rabbits immunized with a KLH conjugated synthetic peptide between 132-161 amino acids from the Central region of human PAH.
Dilution	WB~~1:1000 E~~Use at an assay dependent concentration.
Format	Purified polyclonal antibody supplied in PBS with 0.09% (W/V) sodium azide. This antibody is purified through a protein A column, followed by peptide affinity purification.
Storage	Maintain refrigerated at 2-8°C for up to 2 weeks. For long term storage store at -20°C in small aliquots to prevent freeze-thaw cycles.
Precautions	PAH Antibody (Center) is for research use only and not for use in diagnostic or therapeutic procedures.

Protein Information

Name	PAH
Function	Catalyzes the hydroxylation of L-phenylalanine to L-tyrosine.

Background

PAH encodes the enzyme phenylalanine hydroxylase that is the rate-limiting step in phenylalanine catabolism. Deficiency of this enzyme activity results in the autosomal recessive disorder phenylketonuria.

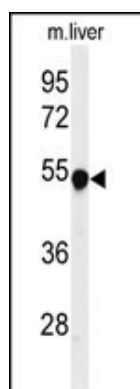
References

Bonyadi, M., et al. Genet Test Mol Biomarkers 14(2):233-235(2010)

Dupuis, J., et al. Nat. Genet. 42(2):105-116(2010)

Santos, L.L., et al. Genet. Mol. Res. 9(1):1-8(2010)

Images



Western blot analysis of PAH Antibody (Center) (Cat. #AP4918c) in mouse liver tissue lysates (35ug/lane). PAH (arrow) was detected using the purified Pab.

Please note: All products are 'FOR RESEARCH USE ONLY. NOT FOR USE IN DIAGNOSTIC OR THERAPEUTIC PROCEDURES'.