

K0406 Antibody (N-term)

Affinity Purified Rabbit Polyclonal Antibody (Pab)

Catalog # AP4976a

Product Information

Application	WB, E
Primary Accession	O43156
Other Accession	NP_055472
Reactivity	Human
Host	Rabbit
Clonality	Polyclonal
Isotype	Rabbit IgG
Clone Names	RB26062
Calculated MW	122069
Antigen Region	41-69

Additional Information

Gene ID	9675
Other Names	TELO2-interacting protein 1 homolog, Protein SMG10, TTI1, KIAA0406, SMG10
Target/Specificity	This K0406 antibody is generated from rabbits immunized with a KLH conjugated synthetic peptide between 41-69 amino acids from the N-terminal region of human K0406.
Dilution	WB~~1:1000 E~~Use at an assay dependent concentration.
Format	Purified polyclonal antibody supplied in PBS with 0.09% (W/V) sodium azide. This antibody is purified through a protein A column, followed by peptide affinity purification.
Storage	Maintain refrigerated at 2-8°C for up to 2 weeks. For long term storage store at -20°C in small aliquots to prevent freeze-thaw cycles.
Precautions	K0406 Antibody (N-term) is for research use only and not for use in diagnostic or therapeutic procedures.

Protein Information

Name	TTI1
Synonyms	KIAA0406, SMG10
Function	Regulator of the DNA damage response (DDR). Part of the TTT complex that is required to stabilize protein levels of the phosphatidylinositol

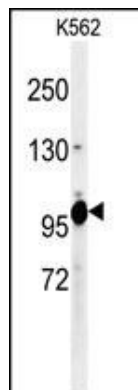
3-kinase-related protein kinase (PIKK) family proteins. The TTT complex is involved in the cellular resistance to DNA damage stresses, like ionizing radiation (IR), ultraviolet (UV) and mitomycin C (MMC). Together with the TTT complex and HSP90 may participate in the proper folding of newly synthesized PIKKs. Promotes assembly, stabilizes and maintains the activity of mTORC1 and mTORC2 complexes, which regulate cell growth and survival in response to nutrient and hormonal signals.

Cellular Location	Cytoplasm.
Tissue Location	Widely expressed.

References

Olsen, J.V., et al. Cell 127(3):635-648(2006)
Deloukas, P., et al. Nature 414(6866):865-871(2001)

Images



Western blot analysis of K0406 Antibody (N-term) (Cat. #AP4976a) in K562 cell line lysates (35ug/lane). K0406 (arrow) was detected using the purified Pab.

Please note: All products are 'FOR RESEARCH USE ONLY. NOT FOR USE IN DIAGNOSTIC OR THERAPEUTIC PROCEDURES'.