

EFR3A Antibody (C-term)

Affinity Purified Rabbit Polyclonal Antibody (Pab)

Catalog # AP4982b

Product Information

Application	WB, FC, E
Primary Accession	Q14156
Other Accession	NP_055952
Reactivity	Human
Host	Rabbit
Clonality	Polyclonal
Isotype	Rabbit IgG
Clone Names	RB25694
Calculated MW	92924
Antigen Region	636-664

Additional Information

Gene ID	23167
Other Names	Protein EFR3 homolog A, Protein EFR3-like, EFR3A, KIAA0143
Target/Specificity	This EFR3A antibody is generated from rabbits immunized with a KLH conjugated synthetic peptide between 636-664 amino acids from the C-terminal region of human EFR3A.
Dilution	WB~~1:1000 FC~~1:10~50 E~~Use at an assay dependent concentration.
Format	Purified polyclonal antibody supplied in PBS with 0.09% (W/V) sodium azide. This antibody is purified through a protein A column, followed by peptide affinity purification.
Storage	Maintain refrigerated at 2-8°C for up to 2 weeks. For long term storage store at -20°C in small aliquots to prevent freeze-thaw cycles.
Precautions	EFR3A Antibody (C-term) is for research use only and not for use in diagnostic or therapeutic procedures.

Protein Information

Name	EFR3A (HGNC:28970)
Function	Component of a complex required to localize phosphatidylinositol 4-kinase (PI4K) to the plasma membrane (PubMed: 23229899 , PubMed: 25608530 , PubMed: 26571211). The complex acts as a regulator of phosphatidylinositol 4-phosphate (PtdIns(4)P) synthesis (Probable). In the complex, EFR3A

probably acts as the membrane-anchoring component (PubMed:[23229899](#)). Also involved in responsiveness to G-protein-coupled receptors; it is however unclear whether this role is direct or indirect (PubMed:[25380825](#)).

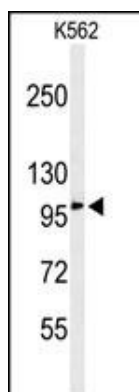
Cellular Location

Cell membrane; Lipid-anchor. Cytoplasm, cytosol. Note=Palmitoylation anchors the protein to the plasma membrane (PubMed:23229899, PubMed:25380825, PubMed:26571211). A small amount is observed in the cytosol (PubMed:25380825).

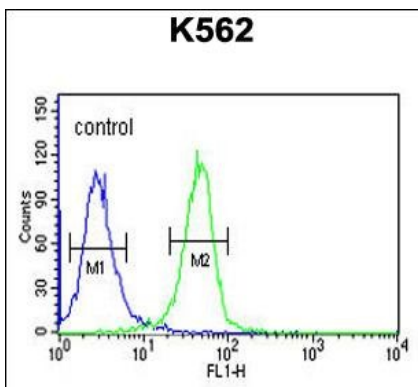
References

Munemoto, Y., et al. Brain Res. Mol. Brain Res. 128(2):131-140(2004)

Images



Western blot analysis of EFR3A Antibody (C-term) (Cat. #AP4982b) in K562 cell line lysates (35ug/lane). EFR3A (arrow) was detected using the purified Pab.



EFR3A Antibody (C-term) (Cat. #AP4982b) flow cytometric analysis of K562 cells (right histogram) compared to a negative control cell (left histogram). FITC-conjugated goat-anti-rabbit secondary antibodies were used for the analysis.

Please note: All products are 'FOR RESEARCH USE ONLY. NOT FOR USE IN DIAGNOSTIC OR THERAPEUTIC PROCEDURES'.