

RAB27B Antibody (C-term)

Affinity Purified Rabbit Polyclonal Antibody (Pab)

Catalog # AP4986b

Product Information

Application	WB, FC, E
Primary Accession	O00194
Other Accession	NP_004154
Reactivity	Human
Host	Rabbit
Clonality	Polyclonal
Isotype	Rabbit IgG
Clone Names	RB24873
Calculated MW	24608
Antigen Region	186-215

Additional Information

Gene ID	5874
Other Names	Ras-related protein Rab-27B, C25KG, RAB27B
Target/Specificity	This RAB27B antibody is generated from rabbits immunized with a KLH conjugated synthetic peptide between 186-215 amino acids from the C-terminal region of human RAB27B.
Dilution	WB~~1:1000 FC~~1:10~50 E~~Use at an assay dependent concentration.
Format	Purified polyclonal antibody supplied in PBS with 0.09% (W/V) sodium azide. This antibody is purified through a protein A column, followed by peptide affinity purification.
Storage	Maintain refrigerated at 2-8°C for up to 2 weeks. For long term storage store at -20°C in small aliquots to prevent freeze-thaw cycles.
Precautions	RAB27B Antibody (C-term) is for research use only and not for use in diagnostic or therapeutic procedures.

Protein Information

Name	RAB27B
Function	Small GTPase which cycles between active GTP-bound and inactive GDP-bound states. In its active state, binds to a variety of effector proteins to regulate homeostasis of late endocytic pathway, including endosomal positioning, maturation and secretion (PubMed: 30771381). Plays a role in

NTRK2/TRKB axonal anterograde transport by facilitating the association of NTRK2/TRKB with KLC1 (PubMed:[21775604](#)). May be involved in targeting uroplakins to urothelial apical membranes (By similarity).

Cellular Location	Membrane; Lipid-anchor. Late endosome
Tissue Location	Expressed primarily in testis.

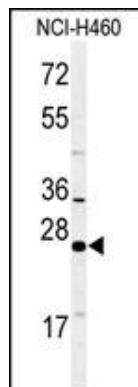
Background

RAB27B may be involved in targeting uroplakins to urothelial apical membranes.

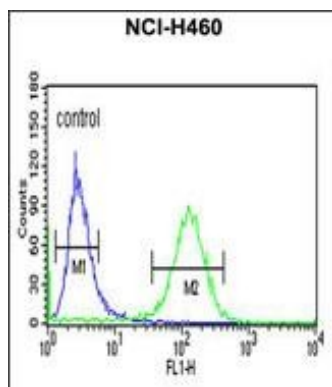
References

Hayasaka, S., et al. Asian J. Androl. 10(4):561-568(2008)
Shirakawa, R., et al. J. Biol. Chem. 279(11):10730-10737(2004)
Tiwari, S., et al. Blood 102(12):3970-3979(2003)

Images



Western blot analysis of RAB27B Antibody (C-term) (Cat. #AP4986b) in NCI-H460 cell line lysates (35ug/lane). RAB27B (arrow) was detected using the purified Pab.



RAB27B Antibody (C-term) (Cat. #AP4986b) flow cytometric analysis of NCI-H460 cells (right histogram) compared to a negative control cell (left histogram). FITC-conjugated goat-anti-rabbit secondary antibodies were used for the analysis.

Please note: All products are 'FOR RESEARCH USE ONLY. NOT FOR USE IN DIAGNOSTIC OR THERAPEUTIC PROCEDURES'.