

POTEH Antibody (N-term)

Affinity Purified Rabbit Polyclonal Antibody (Pab)

Catalog # AP4988a

Product Information

Application	WB, FC, E
Primary Accession	Q6S545
Other Accession	A6NI47 , P0CG38 , Q6S5H5 , A5A3E0 , Q6S8J3 , NP_001129685
Reactivity	Human
Host	Rabbit
Clonality	Polyclonal
Isotype	Rabbit IgG
Clone Names	RB26105
Calculated MW	60965
Antigen Region	32-60

Additional Information

Gene ID	23784
Other Names	POTE ankyrin domain family member H, ANKRD26-like family C member 3, Prostate, ovary, testis-expressed protein on chromosome 22, POTE-22, POTEH, A26C3, ACTBL1, POTE22
Target/Specificity	This POTEH antibody is generated from rabbits immunized with a KLH conjugated synthetic peptide between 32-60 amino acids from the N-terminal region of human POTEH.
Dilution	WB~~1:1000 FC~~1:10~50 E~~Use at an assay dependent concentration.
Format	Purified polyclonal antibody supplied in PBS with 0.09% (W/V) sodium azide. This antibody is purified through a protein A column, followed by peptide affinity purification.
Storage	Maintain refrigerated at 2-8°C for up to 2 weeks. For long term storage store at -20°C in small aliquots to prevent freeze-thaw cycles.
Precautions	POTEH Antibody (N-term) is for research use only and not for use in diagnostic or therapeutic procedures.

Protein Information

Name	POTEH
Synonyms	A26C3, ACTBL1, POTE22

Background

POTEH belongs to the POTE family and contains 7 ANK repeats.

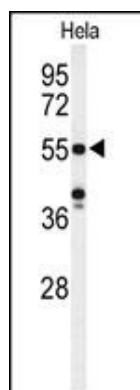
References

Bera, T.K., et al. Gene 337, 45-53 (2004)

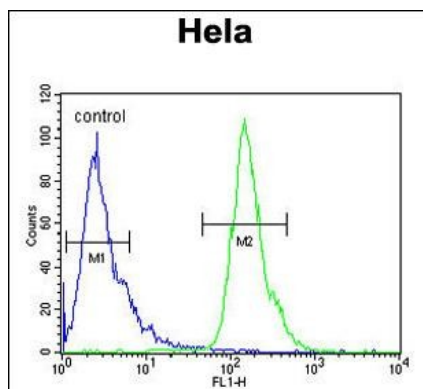
Bera, T.K., et al. Proc. Natl. Acad. Sci. U.S.A. 99(26):16975-16980(2002)

Dunham, I., et al. Nature 402(6761):489-495(1999)

Images



Western blot analysis of POTEH Antibody (N-term) (Cat. #AP4988a) in HeLa cell line lysates (35ug/lane). POTEH (arrow) was detected using the purified Pab.



POTEH Antibody (N-term) (Cat. #AP4988a) flow cytometric analysis of HeLa cells (right histogram) compared to a negative control cell (left histogram). FITC-conjugated goat-anti-rabbit secondary antibodies were used for the analysis.

Please note: All products are 'FOR RESEARCH USE ONLY. NOT FOR USE IN DIAGNOSTIC OR THERAPEUTIC PROCEDURES'.