

MCL1 Antibody

Purified Rabbit Polyclonal Antibody (Pab)

Catalog # AP50001

Product Information

Application	WB, IHC
Primary Accession	Q07820
Reactivity	Human, Mouse, Rat
Host	Rabbit
Clonality	polyclonal
Calculated MW	37337

Additional Information

Gene ID	4170
Other Names	Induced myeloid leukemia cell differentiation protein Mcl-1, Bcl-2-like protein 3, Bcl2-L-3, Bcl-2-related protein EAT/mcl1, mcl1/EAT, MCL1, BCL2L3
Dilution	WB~~ 1:1000 IHC~~1:50-1:100
Format	Rabbit IgG in phosphate buffered saline (without Mg2+ and Ca2+), pH 7.4, 150mM NaCl, 0.09% (W/V) sodium azide and 50% glycerol.
Storage Conditions	-20°C

Protein Information

Name	MCL1
Synonyms	BCL2L3
Function	Involved in the regulation of apoptosis versus cell survival, and in the maintenance of viability but not of proliferation. Mediates its effects by interactions with a number of other regulators of apoptosis. Isoform 1 inhibits apoptosis. Isoform 2 promotes apoptosis.
Cellular Location	Membrane; Single-pass membrane protein. Cytoplasm. Mitochondrion. Nucleus, nucleoplasm Note=Cytoplasmic, associated with mitochondria

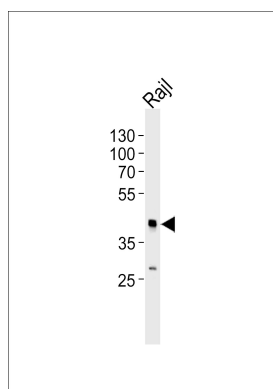
Background

Involved in the regulation of apoptosis versus cell survival, and in the maintenance of viability but not of proliferation. Mediates its effects by interactions with a number of other regulators of apoptosis. Isoform 1 inhibits apoptosis. Isoform 2 promotes apoptosis.

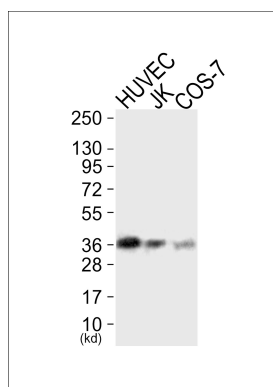
References

Kozopas K.M.,et al.Proc. Natl. Acad. Sci. U.S.A. 90:3516-3520(1993).
Umezawa A.,et al.Cell Struct. Funct. 21:143-150(1996).
Akgul C.,et al.Cell. Mol. Life Sci. 57:684-691(2000).
Bingle C.D.,et al.J. Biol. Chem. 275:22136-22146(2000).
Bae J.,et al.J. Biol. Chem. 275:25255-25261(2000).

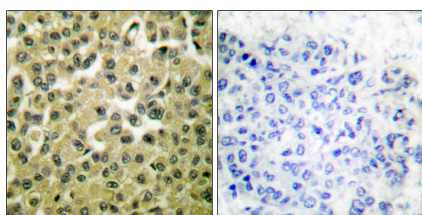
Images



Western blot analysis of lysate from Raji cell line, using MCL1 Antibody(C0258). C0258 was diluted at 1:1000. A goat anti-rabbit IgG H&L(HRP) at 1:5000 dilution was used as the secondary antibody. Lysate at 35ug.



Western blot analysis of extracts from HUVEC cells (Lane 1), JK cells (Lane 2) and COS-7 cells (Lane 3), using MCL1 Antibody. The lane on the left is treated with synthesized peptide.



Immunohistochemical analysis of paraffin-embedded human breast carcinoma tissue using MCL1 antibody .

Please note: All products are 'FOR RESEARCH USE ONLY. NOT FOR USE IN DIAGNOSTIC OR THERAPEUTIC PROCEDURES'.