

# NSE Antibody

Purified Rabbit Polyclonal Antibody (Pab)

Catalog # AP50004

## Product Information

---

<b>Application</b>	WB, IF, IHC
<b>Primary Accession</b>	<a href="#">P09104</a>
<b>Reactivity</b>	Human, Mouse, Rat
<b>Host</b>	Rabbit
<b>Clonality</b>	polyclonal
<b>Calculated MW</b>	47269

## Additional Information

---

<b>Gene ID</b>	2026
<b>Other Names</b>	Gamma-enolase, 2-phospho-D-glycerate hydro-lyase, Enolase 2, Neural enolase, Neuron-specific enolase, NSE, ENO2
<b>Dilution</b>	WB~~ 1:1000 IF~~1:100 IHC~~1:50-1:100
<b>Format</b>	Rabbit IgG in phosphate buffered saline (without Mg2+ and Ca2+), pH 7.4, 150mM NaCl, 0.09% (W/V) sodium azide and 50% glycerol.
<b>Storage Conditions</b>	-20°C

## Protein Information

---

<b>Name</b>	ENO2
<b>Function</b>	Has neurotrophic and neuroprotective properties on a broad spectrum of central nervous system (CNS) neurons. Binds, in a calcium- dependent manner, to cultured neocortical neurons and promotes cell survival (By similarity).
<b>Cellular Location</b>	Cytoplasm. Cell membrane. Note=Can translocate to the plasma membrane in either the homodimeric (alpha/alpha) or heterodimeric (alpha/gamma) form
<b>Tissue Location</b>	The alpha/alpha homodimer is expressed in embryo and in most adult tissues. The alpha/beta heterodimer and the beta/beta homodimer are found in striated muscle, and the alpha/gamma heterodimer and the gamma/gamma homodimer in neurons

## Background

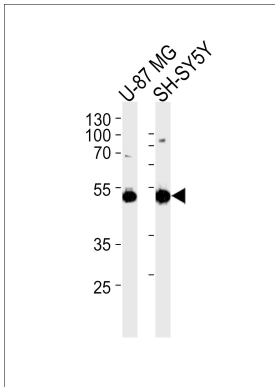
---

Has neurotrophic and neuroprotective properties on a broad spectrum of central nervous system (CNS) neurons. Binds, in a calcium-dependent manner, to cultured neocortical neurons and promotes cell survival (By similarity).

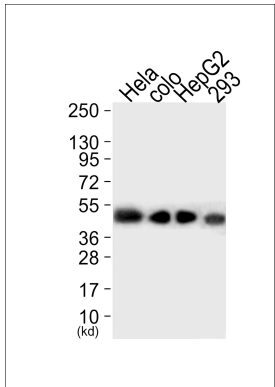
References

McAleese S.M.,et al.Eur. J. Biochem. 178:413-417(1988).  
van Obberghen E.,et al.J. Neurosci. Res. 19:450-456(1988).  
Oliva D.,et al.Gene 79:355-360(1989).  
Oliva D.,et al.Genomics 10:157-165(1991).  
Ansari-Lari M.A.,et al.Genome Res. 7:268-280(1997).

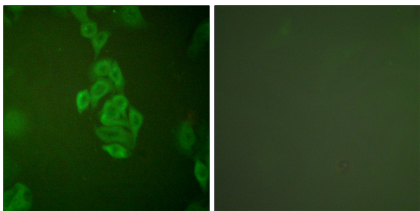
Images



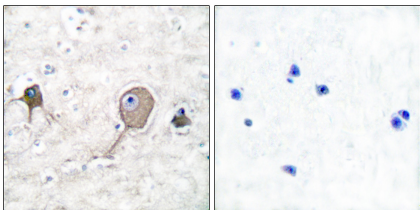
Western blot analysis of lysates from U-87 MG,SH-SY5Y cell line (from left to right),using NSE Antibody(C0280). C0280 was diluted at 1:1000 at each lane. A goat anti-rabbit IgG H&L(HRP) at 1:5000 dilution was used as the secondary antibody.Lysates at 35ug per lane.



Western blot analysis of extracts from Hela cells (Lane 1), colo cells(Lane 2),HepG2 cells(Lane 3) and 293 cells (Lane 4), using NSE Antibody. The lane on the left is treated with synthesized peptide.



Immunofluorescence analysis of A549 cells, using NSE antibody .



Immunohistochemical analysis of paraffin-embedded human brain tissue using NSE antibody .

Please note: All products are 'FOR RESEARCH USE ONLY. NOT FOR USE IN DIAGNOSTIC OR THERAPEUTIC PROCEDURES'.