

# PLCG1 (Ab-771) Antibody

Purified Rabbit Polyclonal Antibody (Pab)

Catalog # AP50025

## Product Information

Application	WB, IHC
Primary Accession	<a href="#">P19174</a>
Reactivity	Human, Mouse, Rat
Host	Rabbit
Clonality	polyclonal
Calculated MW	148532

## Additional Information

Gene ID	5335
Other Names	1-phosphatidylinositol 4, 5-bisphosphate phosphodiesterase gamma-1, PLC-148, Phosphoinositide phospholipase C-gamma-1, Phospholipase C-II, PLC-II, Phospholipase C-gamma-1, PLC-gamma-1, PLCG1, PLC1
Dilution	WB~~ 1:1000 IHC~~1:50-1:100
Format	Rabbit IgG in phosphate buffered saline (without Mg <sup>2+</sup> and Ca <sup>2+</sup> ), pH 7.4, 150mM NaCl, 0.09% (W/V) sodium azide and 50% glycerol.
Storage Conditions	-20°C

## Protein Information

Name	PLCG1 ( <a href="#">HGNC:9065</a> )
Synonyms	PLC1
Function	Mediates the production of the second messenger molecules diacylglycerol (DAG) and inositol 1,4,5-trisphosphate (IP3). Plays an important role in the regulation of intracellular signaling cascades. Becomes activated in response to ligand-mediated activation of receptor-type tyrosine kinases, such as PDGFRA, PDGFRB, EGFR, FGFR1, FGFR2, FGFR3 and FGFR4 (By similarity). Plays a role in actin reorganization and cell migration (PubMed: <a href="#">17229814</a> ). Guanine nucleotide exchange factor that binds the GTPase DNM1 and catalyzes the dissociation of GDP, allowing a GTP molecule to bind in its place, therefore enhancing DNM1-dependent endocytosis (By similarity).
Cellular Location	Cell projection, lamellipodium. Cell projection, ruffle. Note=Rapidly redistributed to ruffles and lamellipodia structures in response to epidermal growth factor (EGF) treatment.

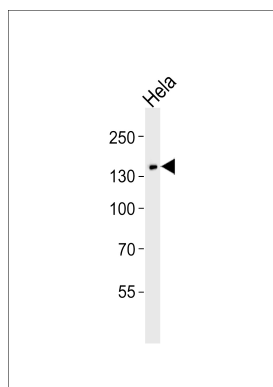
## Background

Mediates the production of the second messenger molecules diacylglycerol (DAG) and inositol 1,4,5-trisphosphate (IP3). Plays an important role in the regulation of intracellular signaling cascades. Becomes activated in response to ligand-mediated activation of receptor-type tyrosine kinases, such as PDGFRA, PDGFRB, FGFR1, FGFR2, FGFR3 and FGFR4. Plays a role in actin reorganization and cell migration.

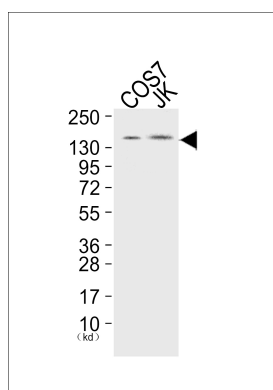
## References

Burgess W.H., et al. Mol. Cell. Biol. 10:4770-4777(1990).  
Deloukas P., et al. Nature 414:865-871(2001).  
Mural R.J., et al. Submitted (SEP-2005) to the EMBL/GenBank/DDBJ databases.  
Mohammadi M., et al. Mol. Cell. Biol. 11:5068-5078(1991).  
Park D.J., et al. J. Biol. Chem. 267:1496-1501(1992).

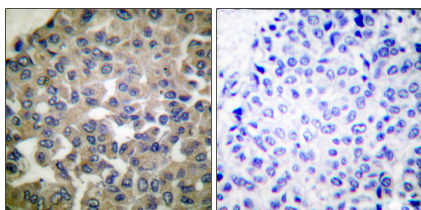
## Images



Western blot analysis of lysates from HeLa cell line, using PLCG1 (Ab-771) Antibody(B0079). B0079 was diluted at 1:1000. A goat anti-rabbit IgG H&L(HRP) at 1:5000 dilution was used as the secondary antibody. Lysates at 35ug.



Western blot analysis of extracts from COS7 cells (Lane 1), and JK cells (Lane 2), using PLCG1 (Ab-771) Antibody. The lane on the left is treated with synthesized peptide.



Immunohistochemical analysis of paraffin-embedded human breast carcinoma tissue using PLCG1 (Ab-771) antibody.

Please note: All products are 'FOR RESEARCH USE ONLY. NOT FOR USE IN DIAGNOSTIC OR THERAPEUTIC PROCEDURES'.