

Uba2 Antibody

Purified Rabbit Polyclonal Antibody (Pab)

Catalog # AP50026

Product Information

Application	WB, IHC
Primary Accession	Q9UBT2
Reactivity	Human
Host	Rabbit
Clonality	polyclonal
Calculated MW	71224

Additional Information

Gene ID	10054
Other Names	SUMO-activating enzyme subunit 2, 632-, Anthracycline-associated resistance ARX, Ubiquitin-like 1-activating enzyme E1B, Ubiquitin-like modifier-activating enzyme 2, UBA2, SAE2, UBLE1B
Dilution	WB~~ 1:1000 IHC~~1:50-1:100
Format	Rabbit IgG in phosphate buffered saline (without Mg ²⁺ and Ca ²⁺), pH 7.4, 150mM NaCl, 0.09% (W/V) sodium azide and 50% glycerol.
Storage Conditions	-20°C

Protein Information

Name	UBA2
Synonyms	SAE2, UBLE1B
Function	The heterodimer acts as an E1 ligase for SUMO1, SUMO2, SUMO3, and probably SUMO4. It mediates ATP-dependent activation of SUMO proteins followed by formation of a thioester bond between a SUMO protein and a conserved active site cysteine residue on UBA2/SAE2.
Cellular Location	Cytoplasm. Nucleus. Note=Shuttles between the cytoplasm and the nucleus, sumoylation is required either for nuclear translocation or nuclear retention

Background

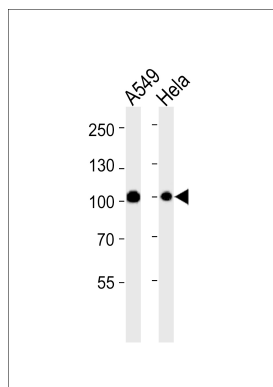
The heterodimer acts as a E1 ligase for SUMO1, SUMO2, SUMO3, and probably SUMO4. It mediates ATP-dependent activation of SUMO proteins followed by formation of a thioester bond between a SUMO

protein and a conserved active site cysteine residue on UBA2/SAE2.

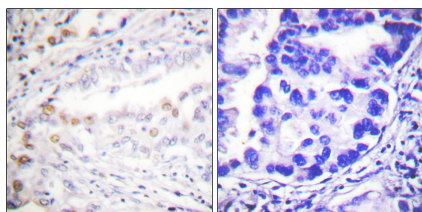
References

Okuma T.,et al.Biochem. Biophys. Res. Commun. 254:693-698(1999).
Gong L.,et al.FEBS Lett. 448:185-189(1999).
Desterro J.M.P.,et al.J. Biol. Chem. 274:10618-10624(1999).
Slapak C.,et al.Submitted (SEP-1995) to the EMBL/GenBank/DDBJ databases.
Wiemann S.,et al.Genome Res. 11:422-435(2001).

Images



Western blot analysis of lysates from A549,HeLa cell line (from left to right),using Uba2 Antibody(C0383). C0383 was diluted at 1:1000 at each lane. A goat anti-rabbit IgG H&L(HRP) at 1:5000 dilution was used as the secondary antibody.Lysates at 35ug per lane.



Immunohistochemistry analysis of paraffin-embedded human lung carcinoma tissue using Uba2 antibody.

Please note: All products are 'FOR RESEARCH USE ONLY. NOT FOR USE IN DIAGNOSTIC OR THERAPEUTIC PROCEDURES'.