

# TCTP Antibody

Purified Rabbit Polyclonal Antibody (Pab)

Catalog # AP50028

## Product Information

---

Application	WB, IHC
Primary Accession	<a href="#">P13693</a>
Reactivity	Human, Mouse, Rat
Host	Rabbit
Clonality	polyclonal
Calculated MW	19595

## Additional Information

---

Gene ID	7178
Other Names	Translationally-controlled tumor protein, TCTP, Fortilin, Histamine-releasing factor, HRF, p23, TPT1
Dilution	WB~~ 1:1000 IHC~~1:50-1:100
Format	Rabbit IgG in phosphate buffered saline (without Mg <sup>2+</sup> and Ca <sup>2+</sup> ), pH 7.4, 150mM NaCl, 0.09% (W/V) sodium azide and 50% glycerol.
Storage Conditions	-20°C

## Protein Information

---

Name	TPT1
Function	Involved in calcium binding and microtubule stabilization (PubMed: <a href="#">12167714</a> , PubMed: <a href="#">15162379</a> , PubMed: <a href="#">15958728</a> ). Acts as a negative regulator of TSC22D1-mediated apoptosis, via interaction with and destabilization of TSC22D1 protein (PubMed: <a href="#">18325344</a> ).
Cellular Location	Cytoplasm.
Tissue Location	Found in several healthy and tumoral cells including erythrocytes, hepatocytes, macrophages, platelets, keratinocytes, erythroleukemia cells, gliomas, melanomas, hepatoblastomas, and lymphomas. It cannot be detected in kidney and renal cell carcinoma (RCC). Expressed in placenta and prostate

## Background

---

Involved in calcium binding and microtubule stabilization.

## References

---

Gross B.,et al.Nucleic Acids Res. 17:8367-8367(1989).

Thiele H.,et al.Thesis (2000), Humboldt-University Berlin, Germany.

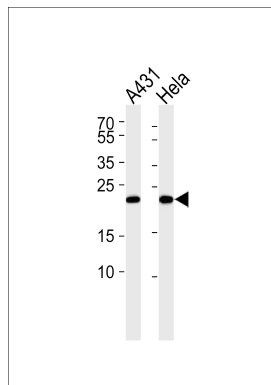
Gnanasekar M.,et al.Submitted (JUL-2003) to the EMBL/GenBank/DDBJ databases.

Gao T.H.,et al.Submitted (JUN-2002) to the EMBL/GenBank/DDBJ databases.

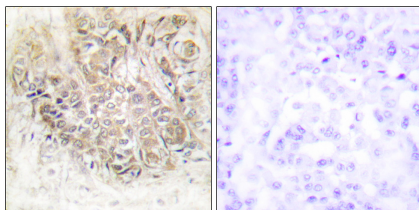
Ebert L.,et al.Submitted (JUN-2004) to the EMBL/GenBank/DDBJ databases.

## Images

---



Western blot analysis of lysates from A431,HeLa cell line (from left to right),using TCTP Antibody(C10362). C10362 was diluted at 1:1000 at each lane. A goat anti-rabbit IgG H&L(HRP) at 1:5000 dilution was used as the secondary antibody.Lysates at 35ug per lane.



Immunohistochemistry analysis of paraffin-embedded human breast carcinoma tissue using TCTP antibody.

Please note: All products are 'FOR RESEARCH USE ONLY. NOT FOR USE IN DIAGNOSTIC OR THERAPEUTIC PROCEDURES'.