

# CDC2L1 Antibody

Purified Rabbit Polyclonal Antibody (Pab)  
Catalog # AP50040

## Product Information

---

<b>Application</b>	WB
<b>Primary Accession</b>	<a href="#">P21127</a>
<b>Reactivity</b>	Human, Mouse
<b>Host</b>	Rabbit
<b>Clonality</b>	polyclonal
<b>Calculated MW</b>	92620

## Additional Information

---

<b>Gene ID</b>	984
<b>Other Names</b>	Cyclin-dependent kinase 11B, Cell division cycle 2-like protein kinase 1, CLK-1, Cell division protein kinase 11B, Galactosyltransferase-associated protein kinase p58/GTA, PITSLRE serine/threonine-protein kinase CDC2L1, p58 CLK-1, CDK11B, CDC2L1, CDK11, PITSLREA, PK58
<b>Dilution</b>	WB~~ 1:1000
<b>Format</b>	Rabbit IgG in phosphate buffered saline (without Mg <sup>2+</sup> and Ca <sup>2+</sup> ), pH 7.4, 150mM NaCl, 0.09% (W/V) sodium azide and 50% glycerol.
<b>Storage Conditions</b>	-20°C

## Protein Information

---

<b>Name</b>	CDK11B
<b>Synonyms</b>	CDC2L1, CDK11, PITSLREA, PK58
<b>Function</b>	Plays multiple roles in cell cycle progression, cytokinesis and apoptosis. Involved in pre-mRNA splicing in a kinase activity- dependent manner. Isoform 7 may act as a negative regulator of normal cell cycle progression.
<b>Cellular Location</b>	Cytoplasm. Nucleus.
<b>Tissue Location</b>	Expressed ubiquitously. Some evidence of isoform- specific tissue distribution.

## Background

---

Appears to play multiple roles in cell cycle progression, cytokinesis and apoptosis. The p110 isoforms have been suggested to be involved in pre-mRNA splicing, potentially by phosphorylating the splicing protein SFRS7. The p58 isoform may act as a negative regulator of normal cell cycle progression.

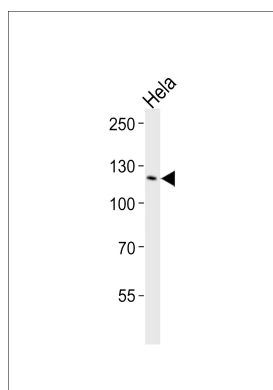
## References

---

Bunnell B.A.,et al.Proc. Natl. Acad. Sci. U.S.A. 87:7467-7471(1990).  
Bunnell B.A.,et al.Proc. Natl. Acad. Sci. U.S.A. 88:2612-2612(1991).  
Eipers P.G.,et al.Genomics 13:613-621(1992).  
Xiang J.,et al.J. Biol. Chem. 269:15786-15794(1994).  
Gururajan R.,et al.Genome Res. 8:929-939(1998).

## Images

---



Western blot analysis of lysates from HeLa cell line ,using CDC2L1 Antibody(C10442). C10442 was diluted at 1:1000. A goat anti-rabbit IgG H&L(HRP) at 1:5000 dilution was used as the secondary antibody.Lysates at 35ug.

Please note: All products are 'FOR RESEARCH USE ONLY. NOT FOR USE IN DIAGNOSTIC OR THERAPEUTIC PROCEDURES'.