

# KAP1 Antibody

Purified Rabbit Polyclonal Antibody (Pab)

Catalog # AP50041

## Product Information

---

<b>Application</b>	WB
<b>Primary Accession</b>	<a href="#">P31321</a>
<b>Reactivity</b>	Human, Mouse, Rat
<b>Host</b>	Rabbit
<b>Clonality</b>	polyclonal
<b>Calculated MW</b>	43073

## Additional Information

---

<b>Gene ID</b>	5575
<b>Other Names</b>	cAMP-dependent protein kinase type I-beta regulatory subunit, PRKAR1B
<b>Dilution</b>	WB~~ 1:1000
<b>Format</b>	Rabbit IgG in phosphate buffered saline (without Mg <sup>2+</sup> and Ca <sup>2+</sup> ), pH 7.4, 150mM NaCl, 0.09% (W/V) sodium azide and 50% glycerol.
<b>Storage Conditions</b>	-20°C

## Protein Information

---

<b>Name</b>	PRKAR1B
<b>Function</b>	Regulatory subunit of the cAMP-dependent protein kinases involved in cAMP signaling in cells.
<b>Cellular Location</b>	Cell membrane.
<b>Tissue Location</b>	Four types of regulatory chains are found: I-alpha, I-beta, II-alpha, and II-beta. Their expression varies among tissues and is in some cases constitutive and in others inducible

## Background

---

Regulatory subunit of the cAMP-dependent protein kinases involved in cAMP signaling in cells.

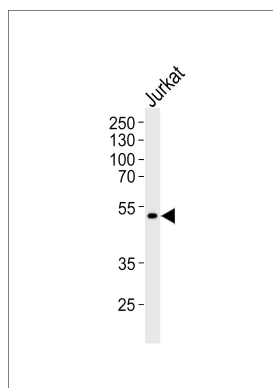
## References

---

Solberg R.,et al.Biochem. Biophys. Res. Commun. 176:166-172(1991).  
Solberg R.,et al.Exp. Cell Res. 214:595-605(1994).  
Ota T.,et al.Nat. Genet. 36:40-45(2004).  
Zhan X.,et al.Anal. Biochem. 354:279-289(2006).  
Daub H.,et al.Mol. Cell 31:438-448(2008).

## Images

---



Western blot analysis of lysates from Jurkat cell line ,using KAP1 Antibody(C10527). C10527 was diluted at 1:1000. A goat anti-rabbit IgG H&L(HRP) at 1:5000 dilution was used as the secondary antibody.Lysates at 35ug.

Please note: All products are 'FOR RESEARCH USE ONLY. NOT FOR USE IN DIAGNOSTIC OR THERAPEUTIC PROCEDURES'.