

# PHKB Antibody

Purified Rabbit Polyclonal Antibody (Pab)

Catalog # AP50043

## Product Information

---

Application	WB
Primary Accession	<a href="#">Q93100</a>
Reactivity	Human, Mouse
Host	Rabbit
Clonality	polyclonal
Calculated MW	124884

## Additional Information

---

Gene ID	5257
Other Names	Phosphorylase b kinase regulatory subunit beta, Phosphorylase kinase subunit beta, PHKB
Dilution	WB~~1:500- 1:1000
Format	Rabbit IgG in phosphate buffered saline (without Mg2+ and Ca2+), pH 7.4, 150mM NaCl, 0.09% (W/V) sodium azide and 50% glycerol.
Storage Conditions	-20°C

## Protein Information

---

Name	PHKB
Function	Phosphorylase b kinase catalyzes the phosphorylation of serine in certain substrates, including troponin I. The beta chain acts as a regulatory unit and modulates the activity of the holoenzyme in response to phosphorylation.
Cellular Location	Cell membrane; Lipid-anchor; Cytoplasmic side

## Background

---

Phosphorylase b kinase catalyzes the phosphorylation of serine in certain substrates, including troponin I. The beta chain acts as a regulatory unit and modulates the activity of the holoenzyme in response to phosphorylation.

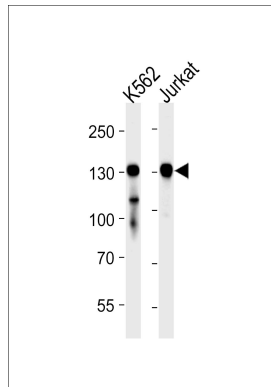
## References

---

Wuellrich-Schmoll A.,et al.Eur. J. Biochem. 238:374-380(1996).  
Beausoleil S.A.,et al.Nat. Biotechnol. 24:1285-1292(2006).  
Daub H.,et al.Mol. Cell 31:438-448(2008).  
Dephoure N.,et al.Proc. Natl. Acad. Sci. U.S.A. 105:10762-10767(2008).  
Oppermann F.S.,et al.Mol. Cell. Proteomics 8:1751-1764(2009).

## Images

---



Western blot analysis of lysates from K562,Jurkat cell line (from left to right),using PHKB Antibody(C11458). C11458 was diluted at 1:1000 at each lane. A goat anti-rabbit IgG H&L(HRP) at 1:5000 dilution was used as the secondary antibody.Lysates at 35ug per lane.

Please note: All products are 'FOR RESEARCH USE ONLY. NOT FOR USE IN DIAGNOSTIC OR THERAPEUTIC PROCEDURES'.