

MTR1B Antibody

Purified Rabbit Polyclonal Antibody (Pab)

Catalog # AP50045

Product Information

Application	WB
Primary Accession	P49286
Reactivity	Human
Host	Rabbit
Clonality	polyclonal
Calculated MW	40188

Additional Information

Gene ID	4544
Other Names	Melatonin receptor type 1B, Mel-1B-R, Mel1b receptor, MTNR1B
Dilution	WB~~ 1:1000
Format	Rabbit IgG in phosphate buffered saline (without Mg ²⁺ and Ca ²⁺), pH 7.4, 150mM NaCl, 0.09% (W/V) sodium azide and 50% glycerol.
Storage Conditions	-20°C

Protein Information

Name	MTNR1B
Function	High affinity receptor for melatonin. Likely to mediate the reproductive and circadian actions of melatonin. The activity of this receptor is mediated by pertussis toxin sensitive G proteins that inhibit adenylate cyclase activity.
Cellular Location	Cell membrane; Multi-pass membrane protein.
Tissue Location	Expressed in retina and less in brain and hippocampus.

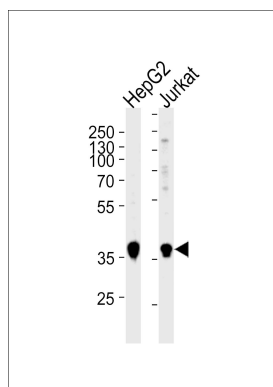
Background

High affinity receptor for melatonin. Likely to mediate the reproductive and circadian actions of melatonin. The activity of this receptor is mediated by pertussis toxin sensitive G proteins that inhibit adenylate cyclase activity.

References

Reppert S.M.,et al.Proc. Natl. Acad. Sci. U.S.A. 92:8734-8738(1995).
Ebisawa T.,et al.Neurosci. Lett. 280:29-32(2000).
King M.M.,et al.Submitted (JAN-2004) to the EMBL/GenBank/DDBJ databases.

Images



Western blot analysis of lysates from HepG2, Jurkat cell line (from left to right), using MTR1B Antibody(G399). G399 was diluted at 1:1000 at each lane. A goat anti-rabbit IgG H&L(HRP) at 1:5000 dilution was used as the secondary antibody. Lysates at 35ug per lane.

Please note: All products are 'FOR RESEARCH USE ONLY. NOT FOR USE IN DIAGNOSTIC OR THERAPEUTIC PROCEDURES'.