

ADD1 (Ab-726) Antibody

Purified Rabbit Polyclonal Antibody (Pab)

Catalog # AP50046

Product Information

Application	WB, IF, IHC
Primary Accession	P35611
Reactivity	Human, Mouse, Rat
Host	Rabbit
Clonality	polyclonal
Calculated MW	80955

Additional Information

Gene ID	118
Other Names	Alpha-adducin, Erythrocyte adducin subunit alpha, ADD1, ADDA
Dilution	WB~~ 1:1000 IF~~1:100 IHC~~1:50-1:100
Format	Rabbit IgG in phosphate buffered saline (without Mg ²⁺ and Ca ²⁺), pH 7.4, 150mM NaCl, 0.09% (W/V) sodium azide and 50% glycerol.
Storage Conditions	-20°C

Protein Information

Name	ADD1
Synonyms	ADDA
Function	Membrane-cytoskeleton-associated protein that promotes the assembly of the spectrin-actin network. Binds to calmodulin.
Cellular Location	Cytoplasm, cytoskeleton. Cell membrane; Peripheral membrane protein; Cytoplasmic side
Tissue Location	Expressed in all tissues. Found in much higher levels in reticulocytes than the beta subunit

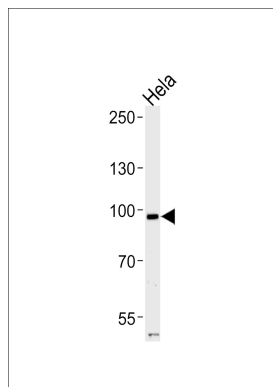
Background

Membrane-cytoskeleton-associated protein that promotes the assembly of the spectrin-actin network. Binds to calmodulin.

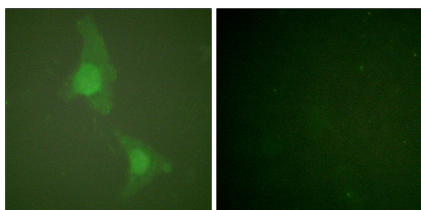
References

Joshi R.L.,et al.J. Cell Biol. 115:665-675(1991).
Lin B.,et al.Genomics 25:93-99(1995).
Hillier L.W.,et al.Nature 434:724-731(2005).
Mural R.J.,et al.Submitted (SEP-2005) to the EMBL/GenBank/DDBJ databases.
Taylor S.A.,et al.Nat. Genet. 2:223-227(1992).

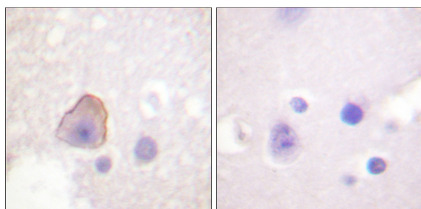
Images



Western blot analysis of lysates from HeLa cell line ,using ADD1 (Ab-726) Antibody(B0002). B0002 was diluted at 1:1000. A goat anti-rabbit IgG H&L(HRP) at 1:5000 dilution was used as the secondary antibody.Lysates at 35ug.



Immunofluorescence analysis of HeLa cells, using ADD1 (Ab-726) antibody .



Immunohistochemical analysis of paraffin-embedded human brain tissue using ADD1 (Ab-726) antibody .

Please note: All products are 'FOR RESEARCH USE ONLY. NOT FOR USE IN DIAGNOSTIC OR THERAPEUTIC PROCEDURES'.