

Cytochrome c Antibody

Purified Rabbit Polyclonal Antibody (Pab)

Catalog # AP50048

Product Information

Application	WB, IHC
Primary Accession	P99999
Reactivity	Human, Mouse, Rat
Host	Rabbit
Clonality	polyclonal
Calculated MW	11749

Additional Information

Gene ID	54205
Other Names	Cytochrome c, CYCS, CYC
Dilution	WB~~ 1:500-1:1000 IHC~~1:50-1:100
Format	Rabbit IgG in phosphate buffered saline (without Mg ²⁺ and Ca ²⁺), pH 7.4, 150mM NaCl, 0.09% (W/V) sodium azide and 50% glycerol.
Storage Conditions	-20°C

Protein Information

Name	CYCS
Synonyms	CYC
Function	Electron carrier protein. The oxidized form of the cytochrome c heme group can accept an electron from the heme group of the cytochrome c1 subunit of cytochrome reductase. Cytochrome c then transfers this electron to the cytochrome oxidase complex, the final protein carrier in the mitochondrial electron-transport chain.
Cellular Location	Mitochondrion intermembrane space. Note=Loosely associated with the inner membrane

Background

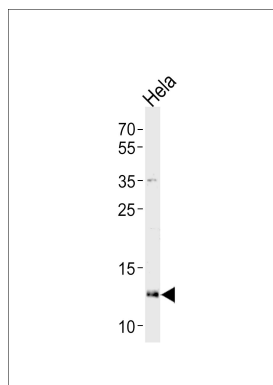
Electron carrier protein. The oxidized form of the cytochrome c heme group can accept an electron from the heme group of the cytochrome c1 subunit of cytochrome reductase. Cytochrome c then transfers this electron to the cytochrome oxidase complex, the final protein carrier in the mitochondrial

electron-transport chain.

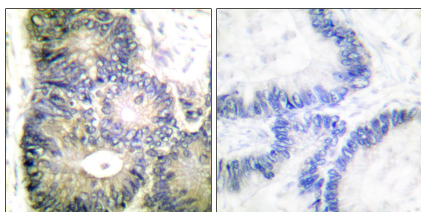
References

Evans M.J.,et al.Proc. Natl. Acad. Sci. U.S.A. 85:9625-9629(1988).
Kalnine N.,et al.Submitted (MAY-2003) to the EMBL/GenBank/DDBJ databases.
Ota T.,et al.Nat. Genet. 36:40-45(2004).
Bechtel S.,et al.BMC Genomics 8:399-399(2007).
Hillier L.W.,et al.Nature 424:157-164(2003).

Images



Western blot analysis of lysates from HeLa cell line ,using Cytochrome c Antibody(C0170). C0170 was diluted at 1:1000. A goat anti-rabbit IgG H&L(HRP) at 1:5000 dilution was used as the secondary antibody.Lysates at 35ug.



Immunohistochemical analysis of paraffin-embedded human colon carcinoma tissue using Cytochrome c antibody .

Citations

- [Isochamaejasmin induces toxic effects on Helicoverpa zea via DNA damage and mitochondria-associated apoptosis](#)
- [Changes in the mitochondrial protein profile due to ROS eruption during ageing of elm \(Ulmus pumila L.\) seeds.](#)

Please note: All products are 'FOR RESEARCH USE ONLY. NOT FOR USE IN DIAGNOSTIC OR THERAPEUTIC PROCEDURES'.