

mGluR6 Antibody

Purified Rabbit Polyclonal Antibody (Pab)

Catalog # AP50050

Product Information

Application	WB, IHC
Primary Accession	O15303
Reactivity	Human
Host	Rabbit
Clonality	polyclonal
Calculated MW	95468

Additional Information

Gene ID	2916
Other Names	Metabotropic glutamate receptor 6, mGluR6, GRM6, GPRC1F, MGLUR6
Dilution	WB~~ 1:1000 IHC~~1:50-1:100
Format	Rabbit IgG in phosphate buffered saline (without Mg ²⁺ and Ca ²⁺), pH 7.4, 150mM NaCl, 0.09% (W/V) sodium azide and 50% glycerol.
Storage Conditions	-20°C

Protein Information

Name	GRM6
Synonyms	GPRC1F, MGLUR6
Function	G-protein coupled receptor for glutamate. Ligand binding causes a conformation change that triggers signaling via guanine nucleotide-binding proteins (G proteins) and modulates the activity of down-stream effectors, such as adenylate cyclase. Signaling inhibits adenylate cyclase activity (By similarity). Signaling stimulates TRPM1 channel activity and Ca(2+) uptake. Required for normal vision.
Cellular Location	Cell membrane; Multi-pass membrane protein. Endoplasmic reticulum membrane; Multi-pass membrane protein. Golgi apparatus membrane; Multi-pass membrane protein. Cell projection, dendrite Note=Subject to trafficking from the endoplasmic reticulum to the Golgi apparatus and then to the cell membrane
Tissue Location	Detected in melanocytes.

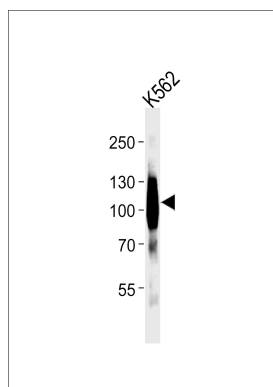
Background

G-protein coupled receptor for glutamate. Ligand binding causes a conformation change that triggers signaling via guanine nucleotide-binding proteins (G proteins) and modulates the activity of down-stream effectors, such as adenylate cyclase. Signaling inhibits adenylate cyclase activity (By similarity). Signaling stimulates TRPM1 channel activity and Ca(2+) uptake. Required for normal vision.

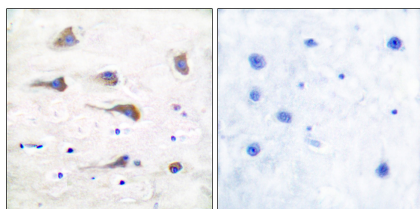
References

Hashimoto T.,et al.Eur. J. Neurosci. 9:1226-1235(1997).
Schmutz J.,et al.Nature 431:268-274(2004).
Devi S.,et al.Pigment Cell Melanoma Res. 26:348-356(2013).
Dryja T.P.,et al.Proc. Natl. Acad. Sci. U.S.A. 102:4884-4889(2005).
Sjoeblom T.,et al.Science 314:268-274(2006).

Images



Western blot analysis of lysates from K562 cell line ,using mGluR6 Antibody(C0210). C0210 was diluted at 1:1000. A goat anti-rabbit IgG H&L(HRP) at 1:5000 dilution was used as the secondary antibody.Lysates at 35ug.



Immunohistochemical analysis of paraffin-embedded human brain tissue using GluR6 antibody .

Please note: All products are 'FOR RESEARCH USE ONLY. NOT FOR USE IN DIAGNOSTIC OR THERAPEUTIC PROCEDURES'.