

# BUB1B Antibody

Purified Rabbit Polyclonal Antibody (Pab)

Catalog # AP50052

## Product Information

---

Application	WB
Primary Accession	<a href="#">O60566</a>
Reactivity	Human, Mouse
Host	Rabbit
Clonality	polyclonal
Calculated MW	119545

## Additional Information

---

Gene ID	701
Other Names	Mitotic checkpoint serine/threonine-protein kinase BUB1 beta, MAD3/BUB1-related protein kinase, hBUBR1, Mitotic checkpoint kinase MAD3L, Protein SSK1, BUB1B, BUBR1, MAD3L, SSK1
Dilution	WB~~ 1:1000
Format	Rabbit IgG in phosphate buffered saline (without Mg2+ and Ca2+), pH 7.4, 150mM NaCl, 0.09% (W/V) sodium azide and 50% glycerol.
Storage Conditions	-20°C

## Protein Information

---

Name	BUB1B
Synonyms	BUBR1, MAD3L, SSK1
Function	Essential component of the mitotic checkpoint. Required for normal mitosis progression. The mitotic checkpoint delays anaphase until all chromosomes are properly attached to the mitotic spindle. One of its checkpoint functions is to inhibit the activity of the anaphase- promoting complex/cyclosome (APC/C) by blocking the binding of CDC20 to APC/C, independently of its kinase activity. The other is to monitor kinetochore activities that depend on the kinetochore motor CENPE. Required for kinetochore localization of CENPE. Negatively regulates PLK1 activity in interphase cells and suppresses centrosome amplification. Also implicated in triggering apoptosis in polyploid cells that exit aberrantly from mitotic arrest. May play a role for tumor suppression.
Cellular Location	Cytoplasm. Nucleus. Chromosome, centromere, kinetochore. Cytoplasm, cytoskeleton, microtubule organizing center, centrosome. Note=Cytoplasmic

in interphase cells. Associates with the kinetochores in early prophase. Kinetochore localization requires BUB1, PLK1 and KNL1

#### Tissue Location

Highly expressed in thymus followed by spleen. Preferentially expressed in tissues with a high mitotic index

## Background

---

Essential component of the mitotic checkpoint. Required for normal mitosis progression. The mitotic checkpoint delays anaphase until all chromosomes are properly attached to the mitotic spindle. One of its checkpoint functions is to inhibit the activity of the anaphase-promoting complex/cyclosome (APC/C) by blocking the binding of CDC20 to APC/C, independently of its kinase activity. The other is to monitor kinetochore activities that depend on the kinetochore motor CENPE. Required for kinetochore localization of CENPE. Negatively regulates PLK1 activity in interphase cells and suppresses centrosome amplification. Also implicated in triggering apoptosis in polyploid cells that exit aberrantly from mitotic arrest. May play a role for tumor suppression.

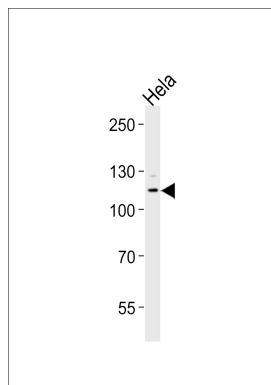
## References

---

Donadelli R.,et al.Biochem. Biophys. Res. Commun. 246:881-887(1998).  
Taylor S.S.,et al.J. Cell Biol. 142:1-11(1998).  
Chan G.K.T.,et al.J. Cell Biol. 143:49-63(1998).  
Cahill D.P.,et al.Nature 392:300-303(1998).  
Davenport J.W.,et al.Genomics 55:113-117(1999).

## Images

---



Western blot analysis of lysates from HeLa cell line ,using BUB1B Antibody(C10142). C10142 was diluted at 1:1000. A goat anti-rabbit IgG H&L(HRP) at 1:5000 dilution was used as the secondary antibody.Lysates at 35ug.

Please note: All products are 'FOR RESEARCH USE ONLY. NOT FOR USE IN DIAGNOSTIC OR THERAPEUTIC PROCEDURES'.