

KAPCG Antibody

Purified Rabbit Polyclonal Antibody (Pab)

Catalog # AP50053

Product Information

Application	WB
Primary Accession	P22612
Reactivity	Human
Host	Rabbit
Clonality	polyclonal
Calculated MW	40434

Additional Information

Gene ID	5568
Other Names	cAMP-dependent protein kinase catalytic subunit gamma, PKA C-gamma, PRKACG
Dilution	WB~~ 1:1000
Format	Rabbit IgG in phosphate buffered saline (without Mg2+ and Ca2+), pH 7.4, 150mM NaCl, 0.09% (W/V) sodium azide and 50% glycerol.
Storage Conditions	-20°C

Protein Information

Name	PRKACG
Function	Phosphorylates a large number of substrates in the cytoplasm and the nucleus.
Tissue Location	Testis specific. But important tissues such as brain and ovary have not been analyzed for the content of transcript

Background

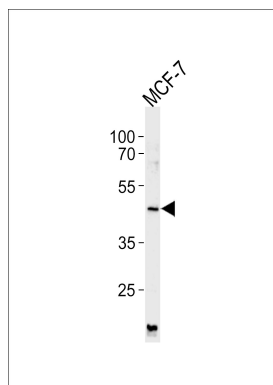
Phosphorylates a large number of substrates in the cytoplasm and the nucleus.

References

Beebe S.J.,et al.Mol. Endocrinol. 4:465-475(1990).
Reinton N.,et al.Genomics 49:290-297(1998).

Humphray S.J.,et al.Nature 429:369-374(2004).
Greenman C.,et al.Nature 446:153-158(2007).

Images



Western blot analysis of lysates from MCF-7 cell line ,using KAPCG Antibody(C10451). C10451 was diluted at 1:1000. A goat anti-rabbit IgG H&L(HRP) at 1:5000 dilution was used as the secondary antibody.Lysates at 35ug.

Please note: All products are 'FOR RESEARCH USE ONLY. NOT FOR USE IN DIAGNOSTIC OR THERAPEUTIC PROCEDURES'.