

# CALR Antibody

Purified Rabbit Polyclonal Antibody (Pab)

Catalog # AP50055

## Product Information

|                   |                        |
|-------------------|------------------------|
| Application       | WB, IF, IHC            |
| Primary Accession | <a href="#">P27797</a> |
| Reactivity        | Human, Mouse, Rat      |
| Host              | Rabbit                 |
| Clonality         | polyclonal             |
| Calculated MW     | 48142                  |

## Additional Information

|                    |   |
|--------------------|---|
| Gene ID            | 811   |
| Other Names        | Calreticulin, CRP55, Calregulin, Endoplasmic reticulum resident protein 60, ERp60, HACBP, grp60, CALR, CRTC                     |
| Dilution           | WB~~ 1:1000 IF~~1:100 IHC~~1:50-1:100   |
| Format             | Rabbit IgG in phosphate buffered saline (without Mg2+ and Ca2+), pH 7.4, 150mM NaCl, 0.09% (W/V) sodium azide and 50% glycerol. |
| Storage Conditions | -20°C   |

## Protein Information

|                   |  |
|-------------------|--|
| Name              | CALR ( <a href="#">HGNC:1455</a> )   |
| Synonyms          | CRTC   |
| Function          | Calcium-binding chaperone that promotes folding, oligomeric assembly and quality control in the endoplasmic reticulum (ER) via the calreticulin/calnexin cycle. This lectin interacts transiently with almost all of the monoglucosylated glycoproteins that are synthesized in the ER (PubMed: <a href="#">7876246</a> ). Interacts with the DNA-binding domain of NR3C1 and mediates its nuclear export (PubMed: <a href="#">11149926</a> ). Involved in maternal gene expression regulation. May participate in oocyte maturation via the regulation of calcium homeostasis (By similarity). Present in the cortical granules of non-activated oocytes, is exocytosed during the cortical reaction in response to oocyte activation and might participate in the block to polyspermy (By similarity). |
| Cellular Location | Endoplasmic reticulum lumen. Cytoplasm, cytosol. Secreted, extracellular space, extracellular matrix. Cell surface. Sarcoplasmic reticulum lumen {ECO:0000250 UniProtKB:P28491}. Cytoplasmic vesicle, secretory vesicle, Cortical granule {ECO:0000250 UniProtKB:Q8K3H7}. Cytolytic granule.   |

Note=Also found in cell surface (T cells), cytosol and extracellular matrix (PubMed:10358038). During oocyte maturation and after parthenogenetic activation accumulates in cortical granules. In pronuclear and early cleaved embryos localizes weakly to cytoplasm around nucleus and more strongly in the region near the cortex (By similarity). In cortical granules of non-activated oocytes, is exocytosed during the cortical reaction in response to oocyte activation (By similarity). {ECO:0000250|UniProtKB:P28491, ECO:0000250|UniProtKB:Q8K3H7, ECO:0000269|PubMed:8418194}

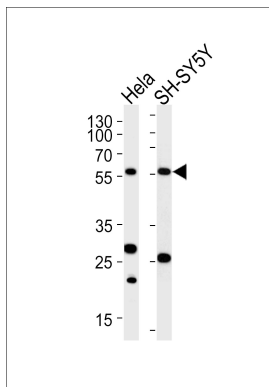
## Background

Calcium-binding chaperone that promotes folding, oligomeric assembly and quality control in the endoplasmic reticulum (ER) via the calreticulin/calnexin cycle. This lectin interacts transiently with almost all of the monoglucosylated glycoproteins that are synthesized in the ER. Interacts with the DNA-binding domain of NR3C1 and mediates its nuclear export. Involved in maternal gene expression regulation. May participate in oocyte maturation via the regulation of calcium homeostasis (By similarity).

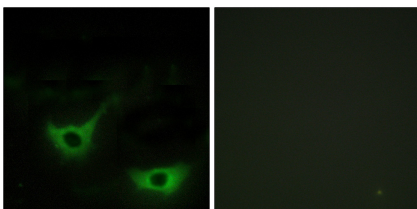
## References

McCauliffe D.P.,et al.J. Clin. Invest. 85:1379-1391(1990).  
 Rokeach L.A.,et al.J. Immunol. 147:3031-3039(1991).  
 McCauliffe D.P.,et al.J. Biol. Chem. 267:2557-2562(1992).  
 Liu J.,et al.Submitted (JUL-2001) to the EMBL/GenBank/DDBJ databases.  
 Goshima N.,et al.Nat. Methods 5:1011-1017(2008).

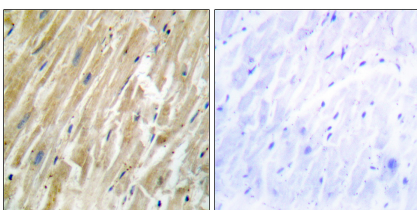
## Images



Western blot analysis of lysates from HeLa,SH-SY5Y cell line (from left to right),using CALR Antibody(C10495). C10495 was diluted at 1:1000 at each lane. A goat anti-rabbit IgG H&L(HRP) at 1:5000 dilution was used as the secondary antibody.Lysates at 35ug per lane.



Immunofluorescence analysis of NIH/3T3 cells, using CALR antibody.



Immunohistochemistry analysis of paraffin-embedded human heart tissue using CALR antibody.

## Citations

---

- [The Individual Effects of Cyclin-Dependent Kinase Inhibitors on Head and Neck Cancer Cells-A Systematic Analysis](#)

Please note: All products are 'FOR RESEARCH USE ONLY. NOT FOR USE IN DIAGNOSTIC OR THERAPEUTIC PROCEDURES'.