

SHC3 HUMAN

Purified Rabbit Polyclonal Antibody (Pab)

Catalog # AP50058

Product Information

Application	WB, IHC
Primary Accession	Q92529
Reactivity	Human, Mouse, Rat
Host	Rabbit
Clonality	polyclonal
Calculated MW	64056

Additional Information

Gene ID	53358
Other Names	SHC-transforming protein 3, Neuronal Shc, N-Shc, Protein Rai, SHC-transforming protein C, Src homology 2 domain-containing-transforming protein C3, SH2 domain protein C3, SHC3, NSHC, SHCC
Dilution	WB~~ 1:1000 IHC~~1:50-1:100
Format	Rabbit IgG in phosphate buffered saline (without Mg2+ and Ca2+), pH 7.4, 150mM NaCl, 0.09% (W/V) sodium azide and 50% glycerol.
Storage Conditions	-20°C

Protein Information

Name	SHC3
Synonyms	NSHC, SHCC
Function	Signaling adapter that couples activated growth factor receptors to signaling pathway in neurons. Involved in the signal transduction pathways of neurotrophin-activated Trk receptors in cortical neurons.
Tissue Location	Mainly expressed in brain. Hardly detectable in other tissues, except in pancreas. Highly expressed in the cerebral cortex, frontal and temporal lobes, occipital pole, hippocampus, caudate nucleus and amygdala. Expressed at low level in the cerebellum, medulla and spinal cord.

Background

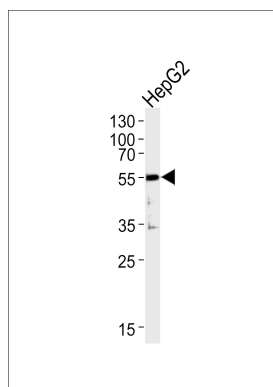
Signaling adapter that couples activated growth factor receptors to signaling pathway in neurons. Involved

in the signal transduction pathways of neurotrophin-activated Trk receptors in cortical neurons.

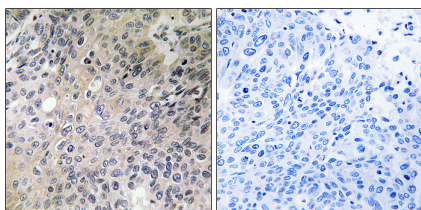
References

Nakamura T.,et al.Oncogene 13:1111-1121(1996).
Pelicci G.,et al.Oncogene 13:633-641(1996).
Humphray S.J.,et al.Nature 429:369-374(2004).
Liu H.Y.,et al.J. Biol. Chem. 277:26046-26056(2002).

Images



Western blot analysis of lysates from HepG2 cell line ,using SHC3_HUMAN(C18734). C18734 was diluted at 1:1000. A goat anti-rabbit IgG H&L(HRP) at 1:5000 dilution was used as the secondary antibody.Lysates at 35ug.



Immunohistochemistry analysis of paraffin-embedded human lung tissue using SHC3 antibody.

Please note: All products are 'FOR RESEARCH USE ONLY. NOT FOR USE IN DIAGNOSTIC OR THERAPEUTIC PROCEDURES'.