

PHKG1 Antibody

Purified Rabbit Polyclonal Antibody (Pab)

Catalog # AP50061

Product Information

Application	WB
Primary Accession	Q16816
Reactivity	Human
Host	Rabbit
Clonality	polyclonal
Calculated MW	45024

Additional Information

Gene ID	5260
Other Names	Phosphorylase b kinase gamma catalytic chain, skeletal muscle/heart isoform, PHK-gamma-M, Phosphorylase kinase subunit gamma-1, Serine/threonine-protein kinase PHKG1, PHKG1, PHKG
Dilution	WB~~ 1:1000
Format	Rabbit IgG in phosphate buffered saline (without Mg2+ and Ca2+), pH 7.4, 150mM NaCl, 0.09% (W/V) sodium azide and 50% glycerol.
Storage Conditions	-20°C

Protein Information

Name	PHKG1
Synonyms	PHKG
Function	Catalytic subunit of the phosphorylase b kinase (PHK), which mediates the neural and hormonal regulation of glycogen breakdown (glycogenolysis) by phosphorylating and thereby activating glycogen phosphorylase. In vitro, phosphorylates PYGM, TNNI3, MAPT/TAU, GAP43 and NRGN/RC3 (By similarity).

Background

Catalytic subunit of the phosphorylase b kinase (PHK), which mediates the neural and hormonal regulation of glycogen breakdown (glycogenolysis) by phosphorylating and thereby activating glycogen phosphorylase. In vitro, phosphorylates PYGM, TNNI3, MAPT/TAU, GAP43 and NRGN/RC3 (By similarity).

References

Wehner M.,et al.Hum. Genet. 96:616-618(1995).

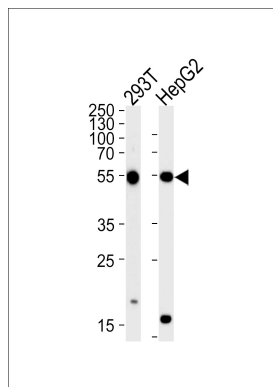
Burwinkel B. Jr.,et al.Submitted (APR-2000) to the EMBL/GenBank/DDBJ databases.

Ota T.,et al.Nat. Genet. 36:40-45(2004).

Hillier L.W.,et al.Nature 424:157-164(2003).

Mural R.J.,et al.Submitted (JUL-2005) to the EMBL/GenBank/DDBJ databases.

Images



Western blot analysis of lysates from 293T,HepG2 cell line (from left to right),using PHKG1 Antibody(C21177). C21177 was diluted at 1:1000 at each lane. A goat anti-rabbit IgG H&L(HRP) at 1:5000 dilution was used as the secondary antibody.Lysates at 35ug per lane.

Please note: All products are 'FOR RESEARCH USE ONLY. NOT FOR USE IN DIAGNOSTIC OR THERAPEUTIC PROCEDURES'.