

LSP1 Antibody

Purified Rabbit Polyclonal Antibody (Pab)

Catalog # AP50066

Product Information

Application	WB
Primary Accession	P33241
Reactivity	Human
Host	Rabbit
Clonality	polyclonal
Calculated MW	37192

Additional Information

Gene ID	4046
Other Names	Lymphocyte-specific protein 1, 47 kDa actin-binding protein, 52 kDa phosphoprotein, pp52, Lymphocyte-specific antigen WP34, LSP1, WP34
Dilution	WB~~ 1:1000
Format	Rabbit IgG in phosphate buffered saline (without Mg ²⁺ and Ca ²⁺), pH 7.4, 150mM NaCl, 0.09% (W/V) sodium azide and 50% glycerol.
Storage Conditions	-20°C

Protein Information

Name	LSP1
Synonyms	WP34
Function	May play a role in mediating neutrophil activation and chemotaxis.
Cellular Location	Cell membrane; Peripheral membrane protein; Cytoplasmic side
Tissue Location	Activated T-lymphocytes.

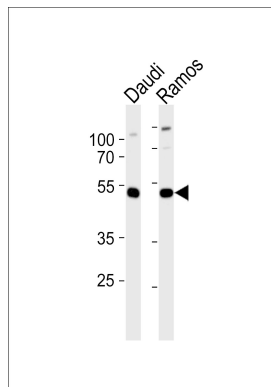
Background

May play a role in mediating neutrophil activation and chemotaxis (By similarity).

References

Jongstra-Bilen J.,et al.J. Immunol. 144:1104-1110(1990).
Kadiyala R.K.,et al.Eur. J. Immunol. 20:2417-2423(1990).
Howard T.,et al.Blood 83:231-241(1994).
Ebert L.,et al.Submitted (JUN-2004) to the EMBL/GenBank/DDBJ databases.
Ota T.,et al.Nat. Genet. 36:40-45(2004).

Images



Western blot analysis of lysate from Daudi,Ramos cell line,using LSP1 Antibody(C16525). C16525 was diluted at 1:1000 at each lane. A goat anti-rabbit IgG H&L(HRP) at 1:5000 dilution was used as the secondary antibody.Lysate at 35ug per lane.

Please note: All products are 'FOR RESEARCH USE ONLY. NOT FOR USE IN DIAGNOSTIC OR THERAPEUTIC PROCEDURES'.