

# ARHGEF1 Antibody

Purified Rabbit Polyclonal Antibody (Pab)

Catalog # AP50069

## Product Information

Application	WB
Primary Accession	<a href="#">Q92888</a>
Reactivity	Human, Mouse, Rat
Host	Rabbit
Clonality	polyclonal
Calculated MW	102435

## Additional Information

Gene ID	9138
Other Names	Rho guanine nucleotide exchange factor 1, 115 kDa guanine nucleotide exchange factor, p115-RhoGEF, p115RhoGEF, Sub15, ARHGEF1
Dilution	WB~~ 1:1000
Format	Rabbit IgG in phosphate buffered saline (without Mg2+ and Ca2+), pH 7.4, 150mM NaCl, 0.09% (W/V) sodium azide and 50% glycerol.
Storage Conditions	-20°C

## Protein Information

Name	ARHGEF1
Function	Seems to play a role in the regulation of RhoA GTPase by guanine nucleotide-binding alpha-12 (GNA12) and alpha-13 (GNA13) subunits (PubMed: <a href="#">9641915</a> , PubMed: <a href="#">9641916</a> ). Acts as a GTPase-activating protein (GAP) for GNA12 and GNA13, and as guanine nucleotide exchange factor (GEF) for RhoA GTPase (PubMed: <a href="#">30521495</a> , PubMed: <a href="#">8810315</a> , PubMed: <a href="#">9641915</a> , PubMed: <a href="#">9641916</a> ). Activated G alpha 13/GNA13 stimulates the RhoGEF activity through interaction with the RGS-like domain (PubMed: <a href="#">9641916</a> ). This GEF activity is inhibited by binding to activated GNA12 (PubMed: <a href="#">9641916</a> ). Mediates angiotensin-2-induced RhoA activation (PubMed: <a href="#">20098430</a> ). In lymphoid follicles, may trigger activation of GNA13 as part of S1PR2-dependent signaling pathway that leads to inhibition of germinal center (GC) B cell growth and migration outside the GC niche.
Cellular Location	Cytoplasm. Membrane. Note=Translocated to the membrane by activated GNA13 or LPA stimulation
Tissue Location	Ubiquitously expressed.

## Background

---

Seems to play a role in the regulation of RhoA GTPase by guanine nucleotide-binding alpha-12 (GNA12) and alpha-13 (GNA13) subunits. Acts as GTPase-activating protein (GAP) for GNA12 and GNA13, and as guanine nucleotide exchange factor (GEF) for RhoA GTPase. Activated G alpha 13/GNA13 stimulates the RhoGEF activity through interaction with the RGS-like domain. This GEF activity is inhibited by binding to activated GNA12. Mediates angiotensin-2- induced RhoA activation.

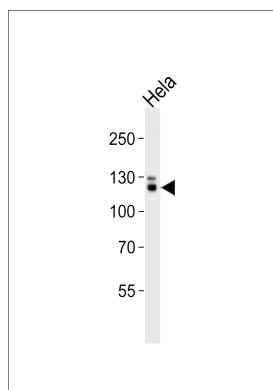
## References

---

Hart M.J.,et al.J. Biol. Chem. 271:25452-25458(1996).  
Aasheim H.-C.,et al.Oncogene 14:1747-1752(1997).  
Kalnine N.,et al.Submitted (MAY-2003) to the EMBL/GenBank/DDBJ databases.  
Kozasa T.,et al.Science 280:2109-2111(1998).  
Hart M.J.,et al.Science 280:2112-2114(1998).

## Images

---



Western blot analysis of lysate from HeLa cell line, using ARHGEF1 Antibody(C18385). C18385 was diluted at 1:1000. A goat anti-rabbit IgG H&L(HRP) at 1:5000 dilution was used as the secondary antibody. Lysate at 35ug.

Please note: All products are 'FOR RESEARCH USE ONLY. NOT FOR USE IN DIAGNOSTIC OR THERAPEUTIC PROCEDURES'.