

RAB6A Antibody

Purified Rabbit Polyclonal Antibody (Pab)

Catalog # AP50071

Product Information

Application	WB
Primary Accession	P20340
Reactivity	Human, Mouse, Rat
Host	Rabbit
Clonality	polyclonal
Calculated MW	23593

Additional Information

Gene ID	5870
Other Names	Ras-related protein Rab-6A, Rab-6, RAB6A, RAB6
Dilution	WB~~ 1:1000
Format	Rabbit IgG in phosphate buffered saline (without Mg ²⁺ and Ca ²⁺), pH 7.4, 150mM NaCl, 0.09% (W/V) sodium azide and 50% glycerol.
Storage Conditions	-20°C

Protein Information

Name	RAB6A (HGNC:9786)
Synonyms	RAB6
Function	<p>The small GTPases Rab are key regulators of intracellular membrane trafficking, from the formation of transport vesicles to their fusion with membranes (PubMed:25962623). Rabs cycle between an inactive GDP-bound form and an active GTP-bound form that is able to recruit to membranes different sets of downstream effectors directly responsible for vesicle formation, movement, tethering and fusion (PubMed:25962623). RAB6A acts as a regulator of COPI-independent retrograde transport from the Golgi apparatus towards the endoplasmic reticulum (ER) (PubMed:25962623). Has a low GTPase activity (PubMed:25962623). Recruits VPS13B to the Golgi membrane (PubMed:25492866). Plays a role in neuron projection development (Probable).</p>
Cellular Location	Golgi apparatus membrane; Lipid- anchor. Cytoplasmic vesicle, secretory vesicle, acrosome membrane {ECO:0000250 UniProtKB:P35279}; Peripheral membrane protein. Note=BICD2 facilitates its targeting to Golgi apparatus membrane. [Isoform 2]: Golgi apparatus membrane; Lipid-anchor

Tissue Location

Ubiquitous..

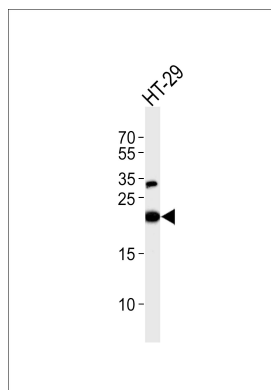
Background

Protein transport. Regulator of membrane traffic from the Golgi apparatus towards the endoplasmic reticulum (ER). Has a low GTPase activity.

References

Zahraoui A.,et al.J. Biol. Chem. 264:12394-12401(1989).
Caillol N.,et al.J. Cell. Biochem. 79:628-647(2000).
Shan J.,et al.Gene 257:67-75(2000).
Echard A.,et al.Mol. Biol. Cell 11:3819-3833(2000).
Barr F.A.,et al.Submitted (FEB-1999) to the EMBL/GenBank/DDBJ databases.

Images



Western blot analysis of lysate from HT-29 cell line,using RAB6A Antibody(C18266). C18266 was diluted at 1:1000. A goat anti-rabbit IgG H&L(HRP) at 1:5000 dilution was used as the secondary antibody.Lysate at 35ug.

Please note: All products are 'FOR RESEARCH USE ONLY. NOT FOR USE IN DIAGNOSTIC OR THERAPEUTIC PROCEDURES'.