

# UBE2T Antibody

Purified Rabbit Polyclonal Antibody (Pab)

Catalog # AP50073

## Product Information

Application	WB
Primary Accession	<a href="#">Q9NPD8</a>
Reactivity	Human, Mouse
Host	Rabbit
Clonality	polyclonal
Calculated MW	22521

## Additional Information

Gene ID	29089
Other Names	Ubiquitin-conjugating enzyme E2 T, Cell proliferation-inducing gene 50 protein, Ubiquitin carrier protein T, Ubiquitin-protein ligase T, UBE2T
Dilution	WB~~ 1:1000
Format	Rabbit IgG in phosphate buffered saline (without Mg <sup>2+</sup> and Ca <sup>2+</sup> ), pH 7.4, 150mM NaCl, 0.09% (W/V) sodium azide and 50% glycerol.
Storage Conditions	-20°C

## Protein Information

Name	UBE2T
Function	Accepts ubiquitin from the E1 complex and catalyzes its covalent attachment to other proteins. Catalyzes monoubiquitination. Involved in mitomycin-C (MMC)-induced DNA repair. Acts as a specific E2 ubiquitin-conjugating enzyme for the Fanconi anemia complex by associating with E3 ubiquitin-protein ligase FANCL and catalyzing monoubiquitination of FANCD2, a key step in the DNA damage pathway (PubMed: <a href="#">16916645</a> , PubMed: <a href="#">17938197</a> , PubMed: <a href="#">19111657</a> , PubMed: <a href="#">19589784</a> , PubMed: <a href="#">28437106</a> ). Also mediates monoubiquitination of FANCL and FANCI (PubMed: <a href="#">16916645</a> , PubMed: <a href="#">17938197</a> , PubMed: <a href="#">19111657</a> , PubMed: <a href="#">19589784</a> ). May contribute to ubiquitination and degradation of BRCA1 (PubMed: <a href="#">19887602</a> ). In vitro able to promote polyubiquitination using all 7 ubiquitin Lys residues, but may prefer 'Lys-11', 'Lys-27', 'Lys-48' and 'Lys-63'-linked polyubiquitination (PubMed: <a href="#">20061386</a> ).
Cellular Location	Nucleus. Note=Accumulates to chromatin

## Background

---

Accepts ubiquitin from the E1 complex and catalyzes its covalent attachment to other proteins. Catalyzes monoubiquitination. Involved in mitomycin-C (MMC)-induced DNA repair: acts as a specific E2 ubiquitin-conjugating enzyme for the Fanconi anemia complex by associating with E3 ubiquitin-protein ligase FANCL and catalyzing monoubiquitination of FANCD2, a key step in the DNA damage pathway. Also mediates monoubiquitination of FANCL and FANCI. May contribute to ubiquitination and degradation of BRCA1. In vitro able to promote polyubiquitination using all 7 ubiquitin Lys residues, but may prefer 'Lys-11', 'Lys-27', 'Lys-48' and 'Lys-63'-linked polyubiquitination.

## References

---

Okaze H.,et al.Submitted (OCT-1999) to the EMBL/GenBank/DDBJ databases.

Hu R.-M.,et al.Proc. Natl. Acad. Sci. U.S.A. 97:9543-9548(2000).

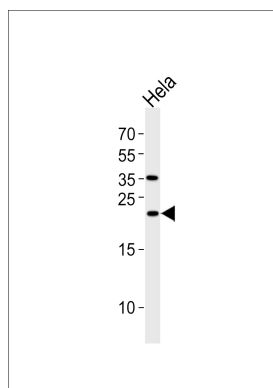
Zhang Q.-H.,et al.Genome Res. 10:1546-1560(2000).

Ota T.,et al.Nat. Genet. 36:40-45(2004).

Kim J.W.,et al.Submitted (FEB-2004) to the EMBL/GenBank/DDBJ databases.

## Images

---



Western blot analysis of lysate from HeLa cell line, using UBE2T Antibody (C19447). C19447 was diluted at 1:1000. A goat anti-rabbit IgG H&L (HRP) at 1:5000 dilution was used as the secondary antibody. Lysate at 35 µg.

Please note: All products are 'FOR RESEARCH USE ONLY. NOT FOR USE IN DIAGNOSTIC OR THERAPEUTIC PROCEDURES'.